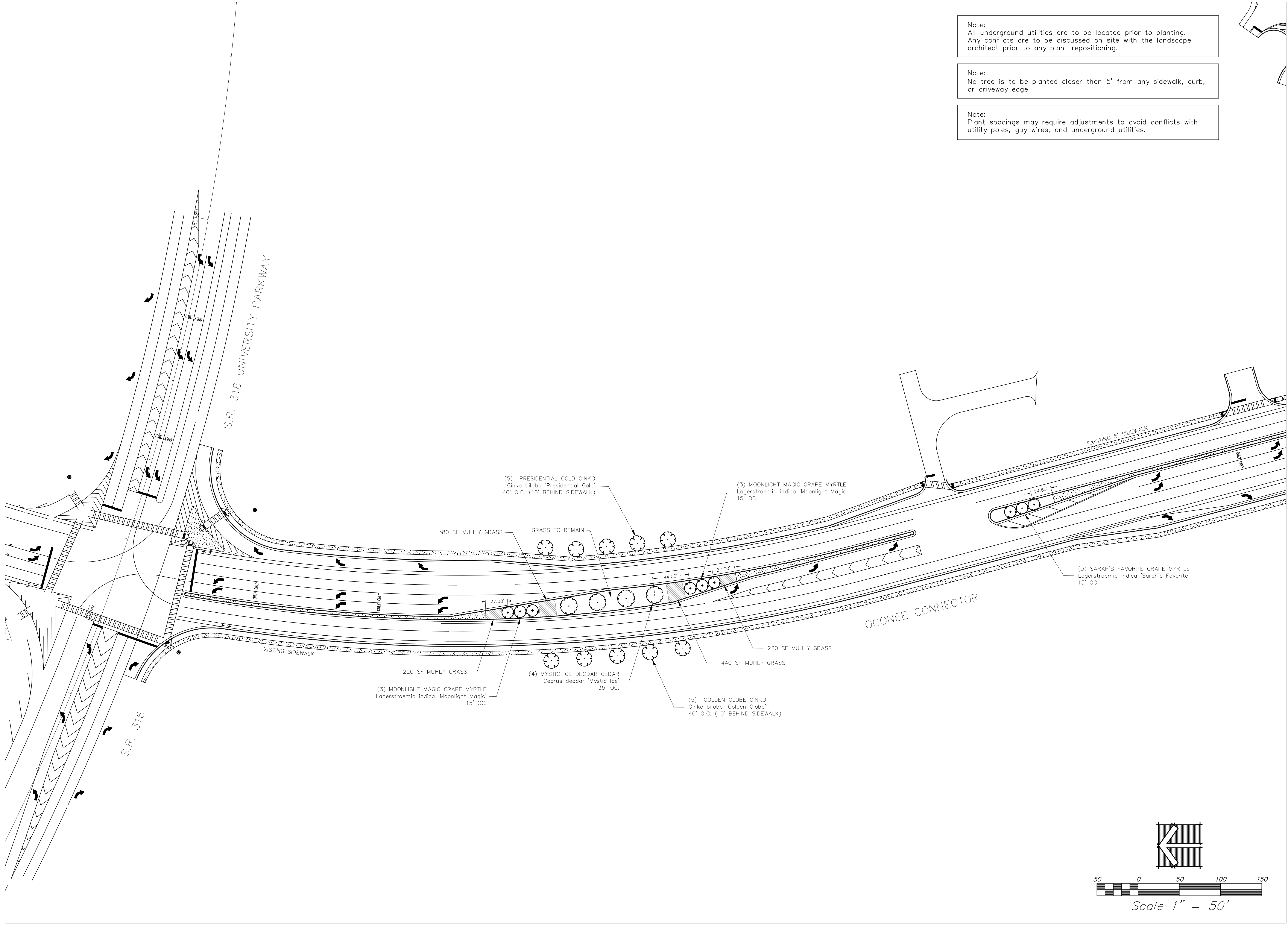




### Colors for Utility Locating

DATE:		10/20/18									
REVISION		Revised Thru 10-20-18									
No.	1										
DRAWN BY:				KGB							
DESIGNED BY:				KAB/KGB							
CHECKED BY:				KAB							
COVER											
SHEET											
1											
DATE: 10/20/2018											
Job # 18-009											
NOT RELEASED FOR CONSTRUCTION											





Note:  
All underground utilities are to be located prior to planting.  
Any conflicts are to be discussed on site with the landscape architect prior to any plant repositioning.

Note:  
No tree is to be planted closer than 5' from any sidewalk, curb, or driveway edge.

Note:  
Plant spacings may require adjustments to avoid conflicts with utility poles, guy wires, and underground utilities.



**BEALL  
& COMPANY**

LAND PLANNING  
LANDSCAPE ARCHITECTURE  
SITE ENGINEERING

3651 MARS HILL ROAD  
SUITE 1400  
WATKINSVILLE, GA 30677  
(706) 543-0907  
www.beallandcompany.com

LANDSCAPE DEVELOPMENT PLANS FOR:  
**MARS HILL PARKWAY  
PHASE I**  
±3.50 MILES FROM UNIVERSITY PARKWAY TO HOG MOUNTAIN ROAD  
OCONEE COUNTY, GEORGIA

OWNER(S)/PERMITTEE  
OCONEE COUNTY  
BOARD OF COMMISSIONERS  
&  
OCONEE INDUSTRIAL  
DEVELOPMENT AUTHORITY

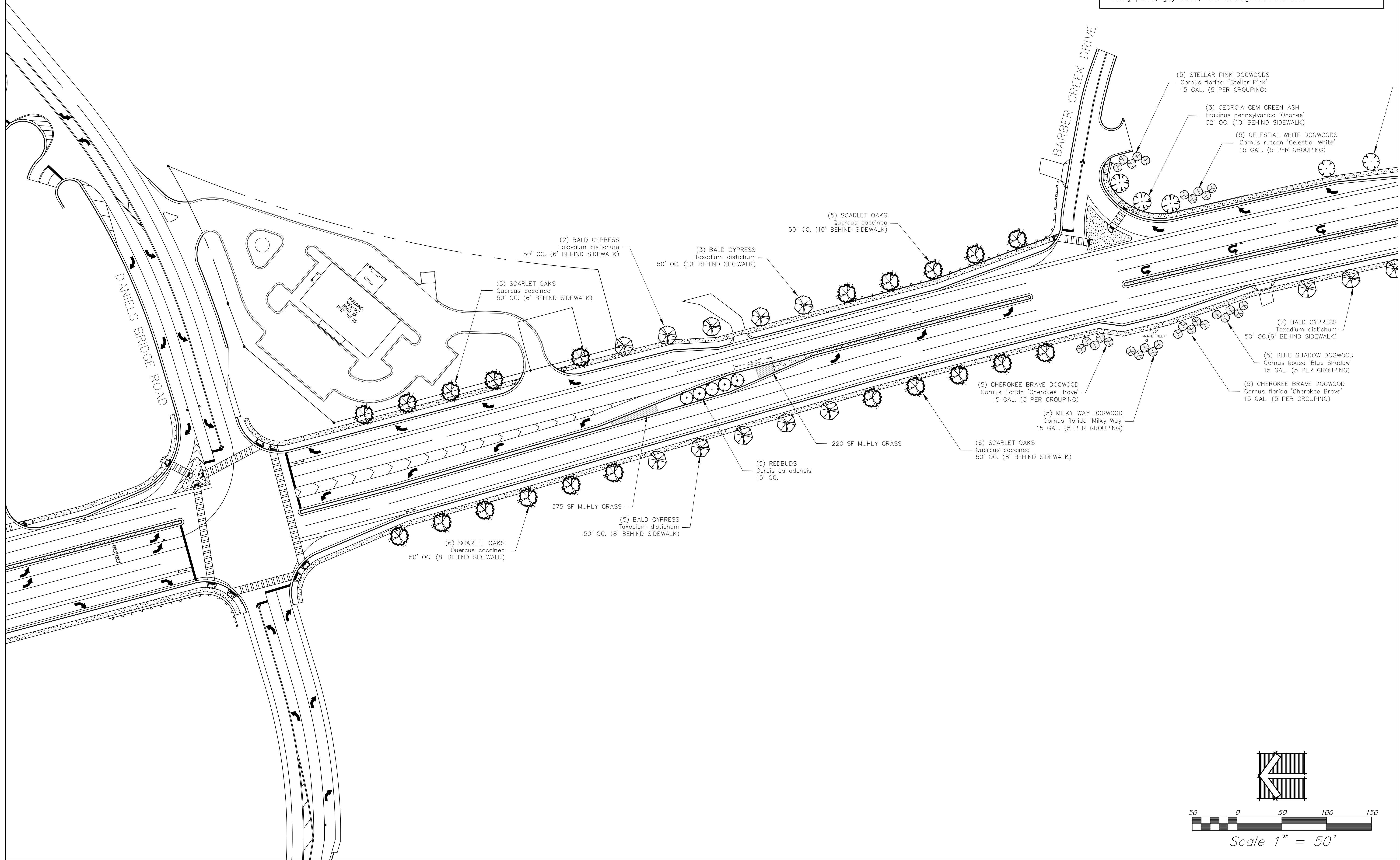


GSWCC LEVEL II  
CERTIFICATION #025972

REVISION		DATE					
No.	REVISION	DATE					
1	Revised Thru 10-20-18	10/20/18					
DRAWN BY:			WJB/KGB				
DESIGNED BY:			WJB/KGB				
CHECKED BY:			KAB				
PLANTING PLAN							
SHEET							
2							
DATE: 10/20/2018							
Job # 18-009							
NOT RELEASED FOR CONSTRUCTION							

NOTICE: THESE DRAWINGS ARE INSTRUMENTS OF PROFESSIONAL SERVICE AND ARE PROTECTED BY COMMON LAW, STATUTORY, AND OTHER RESERVED RIGHTS INCLUDING COPYRIGHT. THESE DRAWINGS MAY NOT BE REPRODUCED OR USED FOR ANY PURPOSE WITHOUT THE WRITTEN CONSENT OF BEALL AND COMPANY AND ASSOCIATED PROJECT CONSULTANTS.





Note:  
All underground utilities are to be located prior to planting.  
Any conflicts are to be discussed on site with the landscape architect prior to any plant repositioning.

Note:  
No tree is to be planted closer than 5' from any sidewalk, curb, or driveway edge.

Note:  
Plant spacings may require adjustments to avoid conflicts with utility poles, guy wires, and underground utilities.



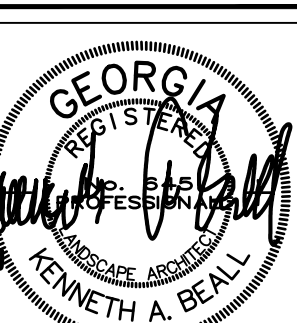
**BEALL  
& COMPANY**

LAND PLANNING  
LANDSCAPE ARCHITECTURE  
SITE ENGINEERING

3651 MARS HILL ROAD  
SUITE 1400  
WATKINSVILLE, GA 30677  
(706) 543-0907  
www.beallandcompany.com

LANDSCAPE DEVELOPMENT PLANS FOR:  
**MARS HILL PARKWAY  
PHASE I**  
±3.50 MILES FROM UNIVERSITY PARKWAY TO HOG MOUNTAIN ROAD  
OCONEE COUNTY, GEORGIA

OWNER(S)/PERMITTEE  
OCONEE COUNTY  
BOARD OF COMMISSIONERS  
&  
OCONEE INDUSTRIAL  
DEVELOPMENT AUTHORITY



GEORGIA  
REGISTERED  
PROFESSIONAL  
LANDSCAPE ARCHITECT  
KENNETH A. BEALL

GSWCC LEVEL II  
CERTIFICATION #025972

REVISION	DATE
No. 1	10/20/18
1	Revised Total 10-20-18
2	
3	
4	
5	
6	
7	
8	
9	
10	
11	
12	
13	
14	
15	
16	
17	
18	
19	
20	
21	
22	
23	
24	
25	
26	
27	
28	
29	
30	
31	
32	
33	
34	
35	
36	
37	
38	
39	
40	
41	
42	
43	
44	
45	
46	
47	
48	
49	
50	

PLANTING PLAN

SHEET

**3**

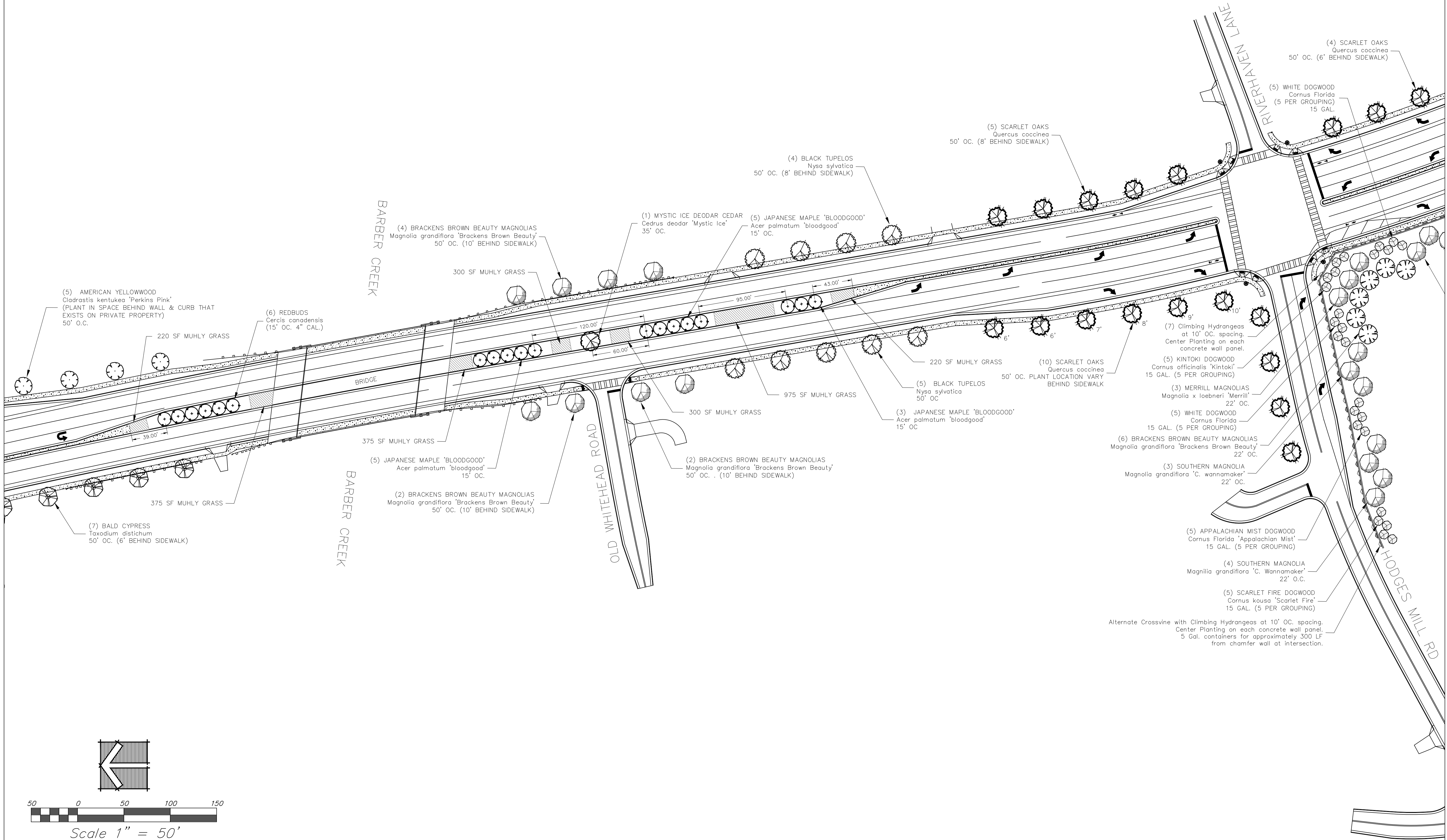
DATE: 10/20/2018  
Job # 18-009  
NOT RELEASED FOR CONSTRUCTION



Note:  
All underground utilities are to be located prior to planting.  
Any conflicts are to be discussed on site with the landscape architect prior to any plant repositioning.

Note:  
No tree is to be planted closer than 5' from any sidewalk, curb, or driveway edge.

Note:  
Plant spacings may require adjustments to avoid conflicts with utility poles, guy wires, and underground utilities.



**BEALL & COMPANY**

LAND PLANNING  
LANDSCAPE ARCHITECTURE  
SITE ENGINEERING

3651 MARS HILL ROAD  
SUITE 1400  
WATKINSVILLE, GA 30677  
(706) 543-0907  
www.beallandcompany.com

LANDSCAPE DEVELOPMENT PLANS FOR:  
**MARS HILL PARKWAY  
PHASE I**  
±3.50 MILES FROM UNIVERSITY PARKWAY TO HOG MOUNTAIN ROAD  
CLONEE COUNTY, GEORGIA

OWNER(S)/PERMITTEE  
OCONEE COUNTY  
BOARD OF COMMISSIONERS  
&  
OCONEE INDUSTRIAL  
DEVELOPMENT AUTHORITY

GEORGIA  
REGISTERED  
PROFESSIONAL  
LANDSCAPE ARCHITECT  
KENNETH A. BEALL

GSWCC LEVEL II  
CERTIFICATION #025972

REVISION	DATE	BY	CHKD
No.	1	10/20/18	
1	Revised	10-20-18	
DRAWN BY: WJB/KCB			
DESIGNED BY: WJB/KCB			
CHECKED BY: KAB			
PLANTING PLAN			
SHEET			
4			
DATE: 10/20/2018			
Job # 18-009			
NOT RELEASED FOR CONSTRUCTION			

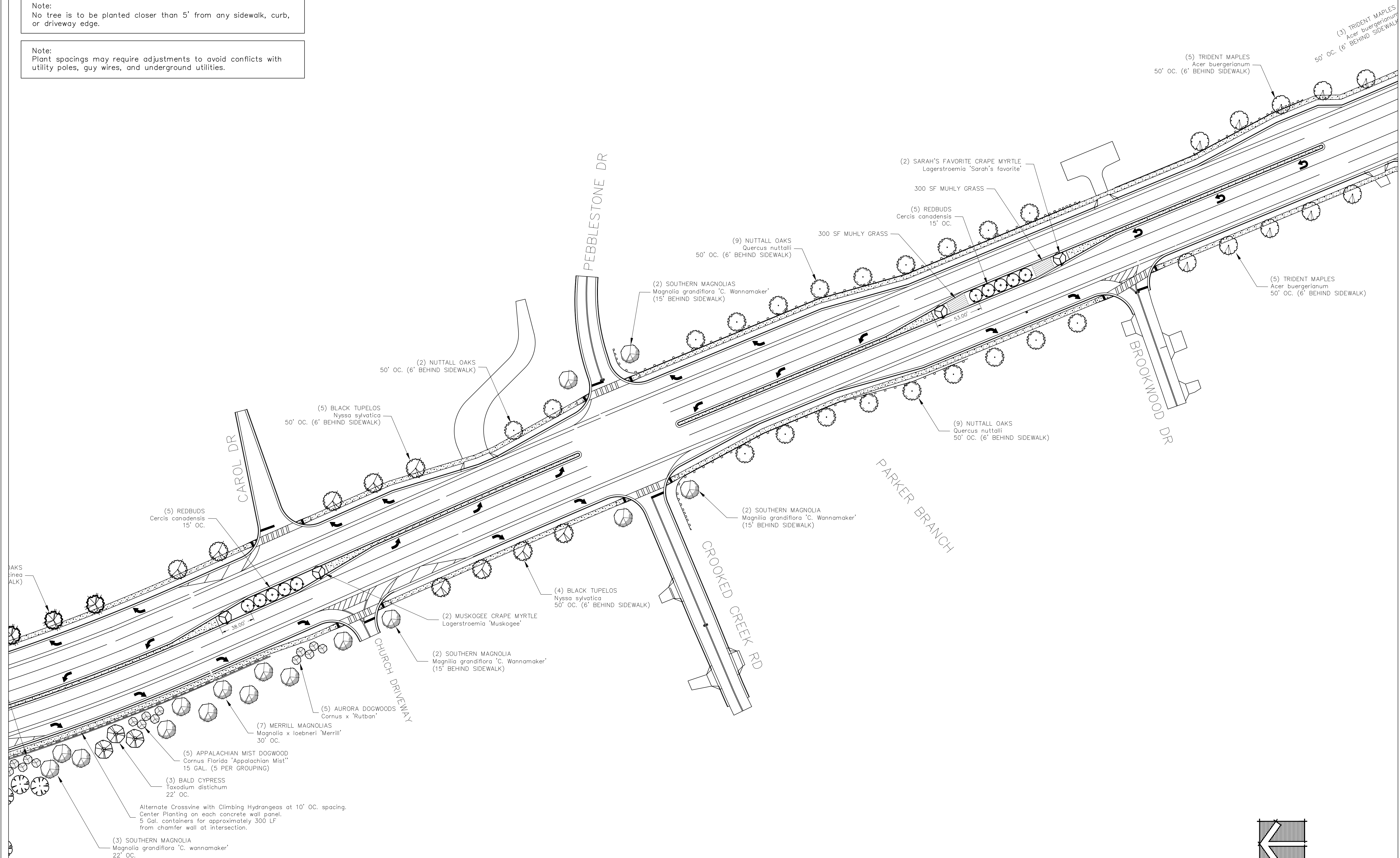
NOTICE: THESE DRAWINGS ARE INSTRUMENTS OF PROFESSIONAL SERVICE AND ARE PROTECTED BY COMMON LAW, STATUTORY, AND OTHER RESERVED RIGHTS INCLUDING COPYRIGHT. THESE DRAWINGS MAY NOT BE REPRODUCED OR USED FOR ANY PURPOSE WITHOUT THE WRITTEN CONSENT OF BEALL AND COMPANY AND ASSOCIATED PROJECT CONSULTANTS.

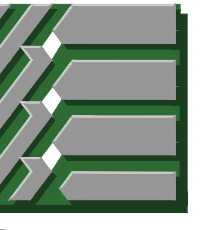


Note:  
All underground utilities are to be located prior to planting.  
Any conflicts are to be discussed on site with the landscape architect prior to any plant repositioning.

Note:  
No tree is to be planted closer than 5' from any sidewalk, curb, or driveway edge.

Note:  
Plant spacings may require adjustments to avoid conflicts with utility poles, guy wires, and underground utilities.





**BEALL  
& COMPANY**

LAND PLANNING  
LANDSCAPE ARCHITECTURE  
SITE ENGINEERING

3651 MARS HILL ROAD  
SUITE 1400  
WATKINSVILLE, GA 30677  
(706) 543-0907  
www.beallandcompany.com


LANDSCAPE DEVELOPMENT PLANS FOR:

**MARS HILL PARKWAY  
PHASE I**

±3.50 MILES FROM UNIVERSITY PARKWAY TO HOG MOUNTAIN ROAD  
OCONEE COUNTY, GEORGIA

OWNER(S)/PERMITTEE

OCONEE COUNTY  
BOARD OF COMMISSIONERS  
&  
OCONEE INDUSTRIAL  
DEVELOPMENT AUTHORITY



GSWCC LEVEL II  
CERTIFICATION #025972

REVISION	DATE	REVISION	DATE
No. 1	10/20/18		

DRAWN BY: WJB/KGB

DESIGNED BY: WJB/KGB

CHECKED BY: KAB

PLANTING PLAN

SHEET

**5**

DATE: 10/20/2018  
Job # 18-009  
NOT RELEASED FOR CONSTRUCTION

NOTICE: THESE DRAWINGS ARE INSTRUMENTS OF PROFESSIONAL SERVICE AND ARE PROTECTED BY COMMON LAW, STATUTORY, AND OTHER RESERVED RIGHTS INCLUDING COPYRIGHT. THESE DRAWINGS MAY NOT BE REPRODUCED OR USED FOR ANY PURPOSE WITHOUT THE WRITTEN CONSENT OF BEALL AND COMPANY AND ASSOCIATED PROJECT CONSULTANTS.

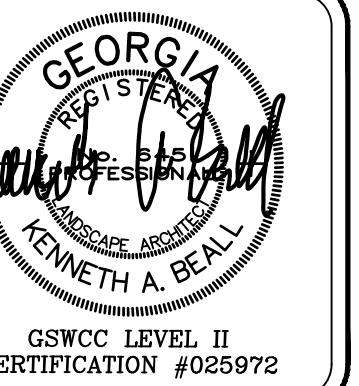


Note:  
Plant spacings may require adjustments to avoid conflicts with utility poles, guy wires, and underground utilities.



LANDSCAPE DEVELOPMENT PLANS FOR:  
**MARS HILL PARKWAY**  
PHASE I  
50 MILES FROM UNIVERSITY PARKWAY TO HOG MOUNTAIN ROAD  
OCONEE COUNTY, GEORGIA

OWNER(S)/PERMITEE  
DOONEE COUNTY  
BOARD OF COMMISSIONERS  
&  
DOONEE INDUSTRIAL  
DEVELOPMENT AUTHORITY



DATE:	10/20/18						
REVISION							
No.	1						
DRAWN BY:		WJB/KGB					
DESIGNED BY:		WJB/KGB					
CHECKED BY:		KAB					

## PLANTING PLAN

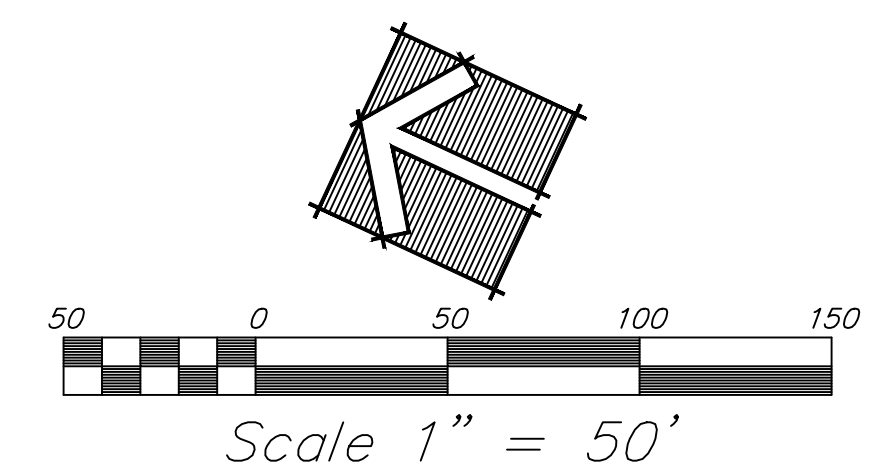
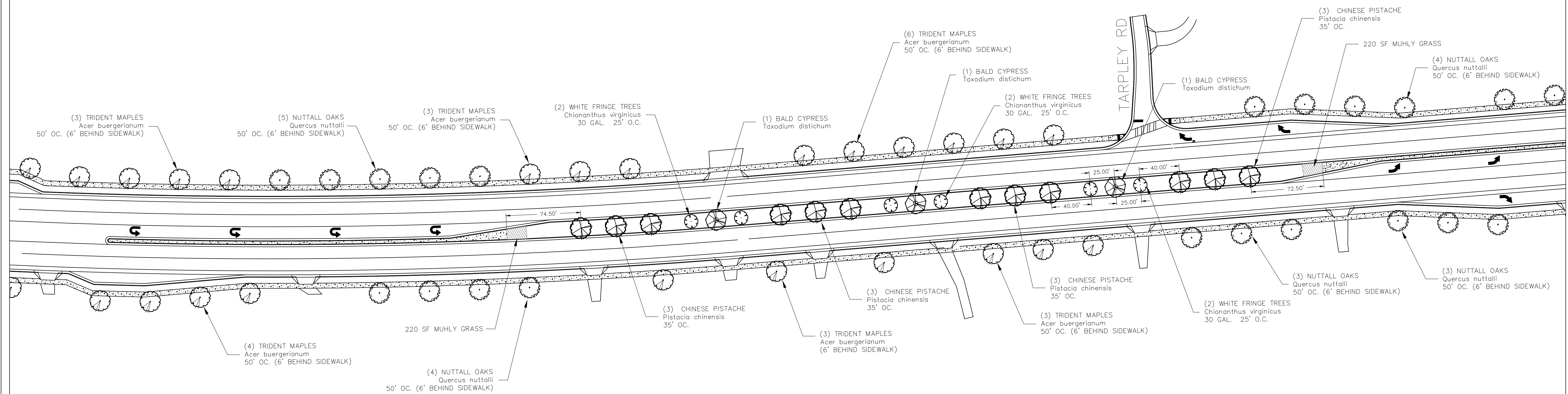
EET

6

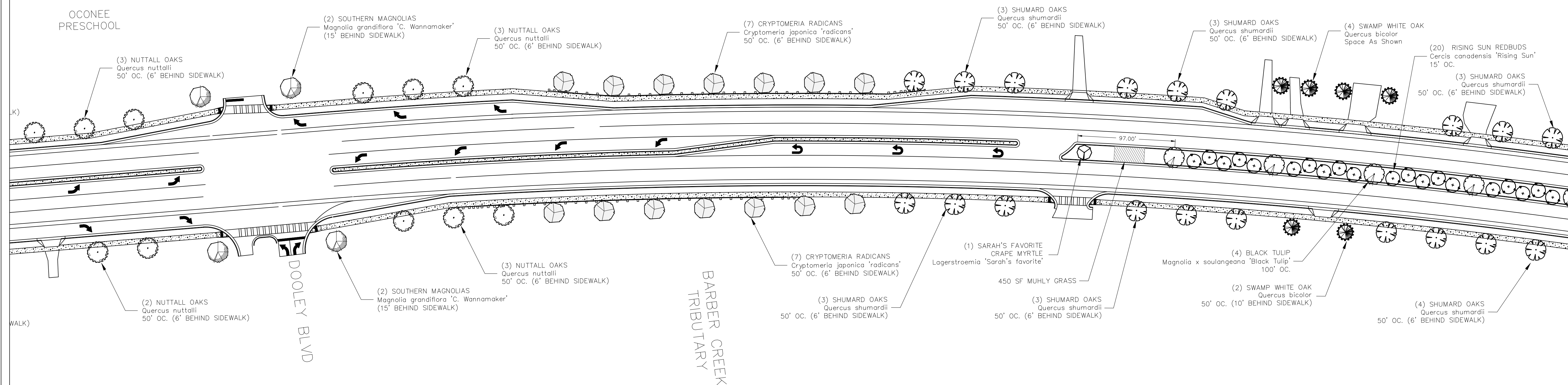
DATE: 10/20/2018

Job # 18-009

RELEASED FOR CONSTRUCTION







Note:  
All underground utilities are to be located prior to planting.  
Any conflicts are to be discussed on site with the landscape architect prior to any plant repositioning.

Note:  
No tree is to be planted closer than 5' from any sidewalk, curb, or driveway edge.

Note:  
Plant spacings may require adjustments to avoid conflicts with utility poles, guy wires, and underground utilities.



**BEALL  
& COMPANY**

LAND PLANNING  
LANDSCAPE ARCHITECTURE  
SITE ENGINEERING

3651 MARS HILL ROAD  
SUITE 1400  
WATKINSVILLE, GA 30677  
(706) 543-0907  
www.beallandcompany.com

LANDSCAPE DEVELOPMENT PLANS FOR:  
**MARS HILL PARKWAY  
PHASE I**  
±3.50 MILES FROM UNIVERSITY PARKWAY TO HOG MOUNTAIN ROAD  
OCONEE COUNTY, GEORGIA

OWNER(S)/PERMITTEE  
OCONEE COUNTY  
BOARD OF COMMISSIONERS  
&  
OCONEE INDUSTRIAL  
DEVELOPMENT AUTHORITY



GSWCC LEVEL II  
CERTIFICATION #025972

REVISION	DATE	10/20/18
No.	1	
Revised	Total	10-20-18
DRAWN BY:	WJB/KCB	
DESIGNED BY:	WJB/KCB	
CHECKED BY:	KAB	

PLANTING PLAN

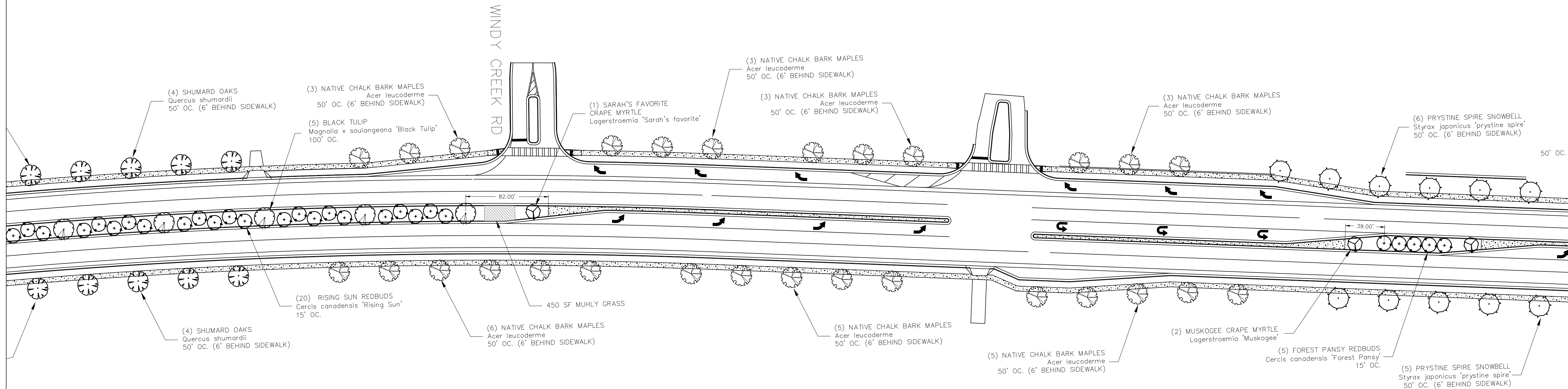
SHEET

**7**

DATE: 10/20/2018  
Job # 18-009  
NOT RELEASED FOR CONSTRUCTION

NOTICE: THESE DRAWINGS ARE INSTRUMENTS OF PROFESSIONAL SERVICE AND ARE PROTECTED BY COMMON LAW, STATUTORY, AND OTHER RESERVED RIGHTS INCLUDING COPYRIGHT. THESE DRAWINGS MAY NOT BE REPRODUCED OR USED FOR ANY PURPOSE WITHOUT THE WRITTEN CONSENT OF BEALL AND COMPANY AND ASSOCIATED PROJECT CONSULTANTS.

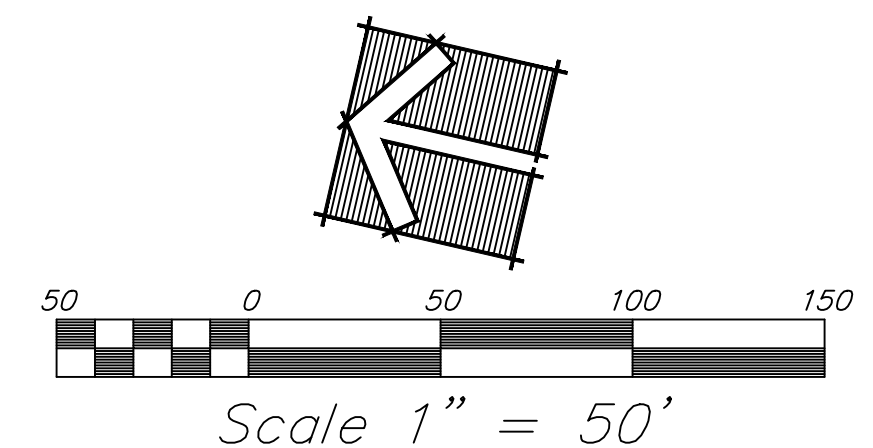




Note:  
All underground utilities are to be located prior to planting.  
Any conflicts are to be discussed on site with the landscape architect prior to any plant repositioning.

Note:  
No tree is to be planted closer than 5' from any sidewalk, curb, or driveway edge.

Note:  
Plant spacings may require adjustments to avoid conflicts with utility poles, guy wires, and underground utilities.



**BEALL & COMPANY**  
LAND PLANNING  
LANDSCAPE ARCHITECTURE  
SITE ENGINEERING  
3651 MARS HILL ROAD  
SUITE 1400  
WATKINSVILLE, GA 30677  
(706) 543-0907  
www.beallandcompany.com

LANDSCAPE DEVELOPMENT PLANS FOR:  
**MARS HILL PARKWAY**  
PHASE I  
±3.50 MILES FROM UNIVERSITY PARKWAY TO HOG MOUNTAIN ROAD  
OCONEE COUNTY, GEORGIA

OWNER(S)/PERMITTEE  
OCONEE COUNTY  
BOARD OF COMMISSIONERS  
&  
OCONEE INDUSTRIAL  
DEVELOPMENT AUTHORITY

GEORGIA  
REGISTERED  
LANDSCAPE ARCHITECT  
KENNETH A. BEALL  
GSWCC LEVEL II  
CERTIFICATION #025972

REVISION	DATE
No.	
1	10/20/18
Revised	10-20-18
DRAWN BY:	WJB/KGB
DESIGNED BY:	WJB/KGB
CHECKED BY:	KAB

PLANTING PLAN

SHEET

8

DATE: 10/20/2018  
Job # 18-009  
NOT RELEASED FOR CONSTRUCTION

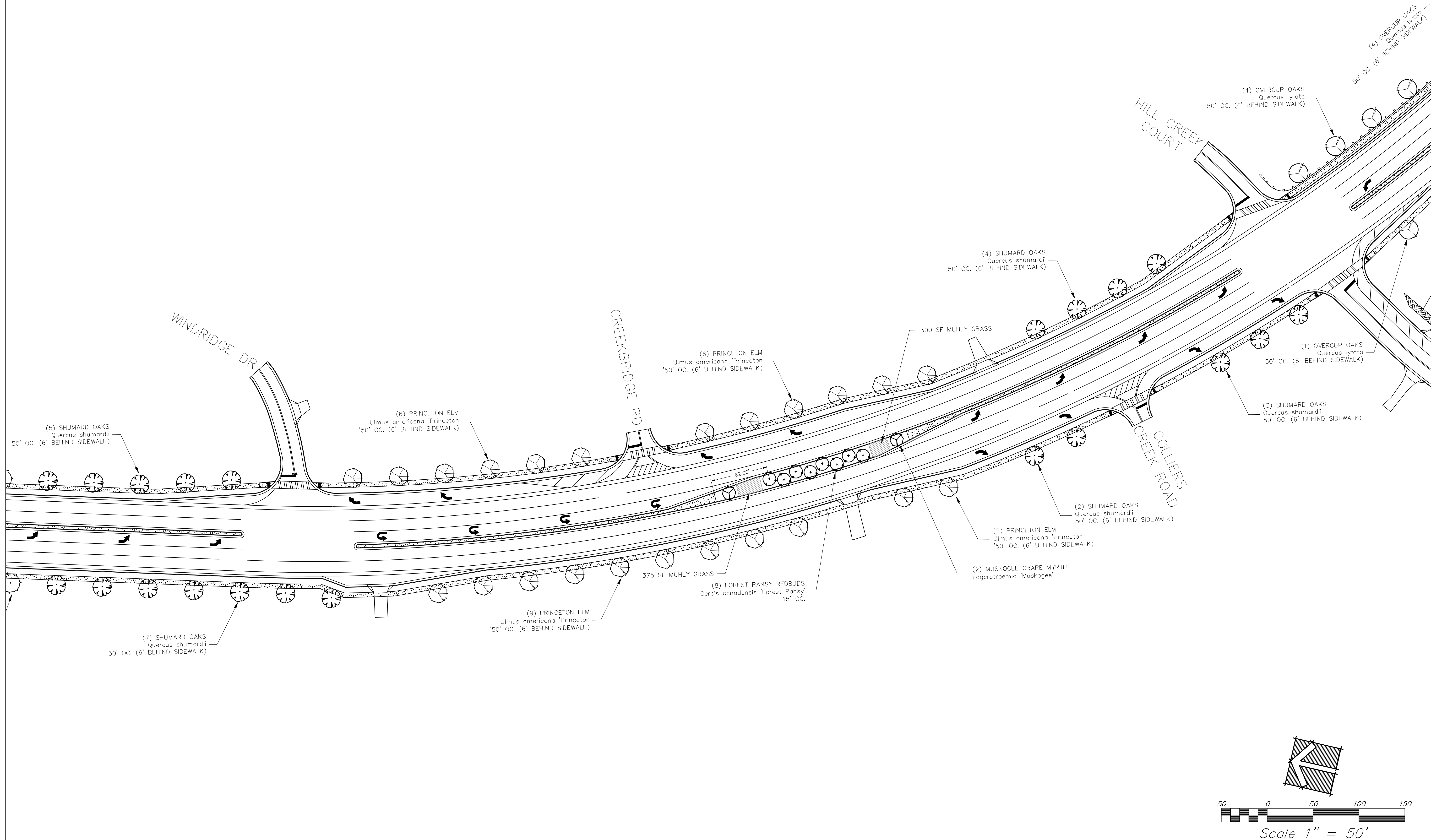
NOTICE: THESE DRAWINGS ARE INSTRUMENTS OF PROFESSIONAL SERVICE AND ARE PROTECTED BY COMMON LAW, STATUTORY, AND OTHER RESERVED RIGHTS INCLUDING COPYRIGHT. THESE DRAWINGS MAY NOT BE REPRODUCED OR USED FOR ANY PURPOSE WITHOUT THE WRITTEN CONSENT OF BEALL AND COMPANY AND ASSOCIATED PROJECT CONSULTANTS.



Note:  
All underground utilities are to be located prior to planting.  
Any conflicts are to be discussed on site with the landscape architect prior to any plant repositioning.

Note:  
No tree is to be planted closer than 5' from any sidewalk, curb, or driveway edge.

Note:  
Plant spacings may require adjustments to avoid conflicts with utility poles, guy wires, and underground utilities.



**BEALL & COMPANY**  
LAND PLANNING  
LANDSCAPE ARCHITECTURE  
SITE ENGINEERING  
3651 MARS HILL ROAD  
SUITE 1400  
WATKINSVILLE, GA 30677  
(706) 543-0907  
www.beallandcompany.com

LANDSCAPE DEVELOPMENT PLANS FOR:  
**MARS HILL PARKWAY  
PHASE I**  
±3.50 MILES FROM UNIVERSITY PARKWAY TO HOG MOUNTAIN ROAD  
OCONEE COUNTY, GEORGIA

OWNER(S)/PERMITTEE  
OCONEE COUNTY  
BOARD OF COMMISSIONERS  
&  
OCONEE INDUSTRIAL  
DEVELOPMENT AUTHORITY

GEORGIA  
REGISTERED  
LANDSCAPE ARCHITECT  
KENNETH A. BEALL  
GSWCC LEVEL II  
CERTIFICATION #025972

REVISION	DATE
No. 1	10/20/18
1	Revised Total 10-20-18
DRAWN BY:	WJB/KGB
DESIGNED BY:	WJB/KGB
CHECKED BY:	KAB

PLANTING PLAN

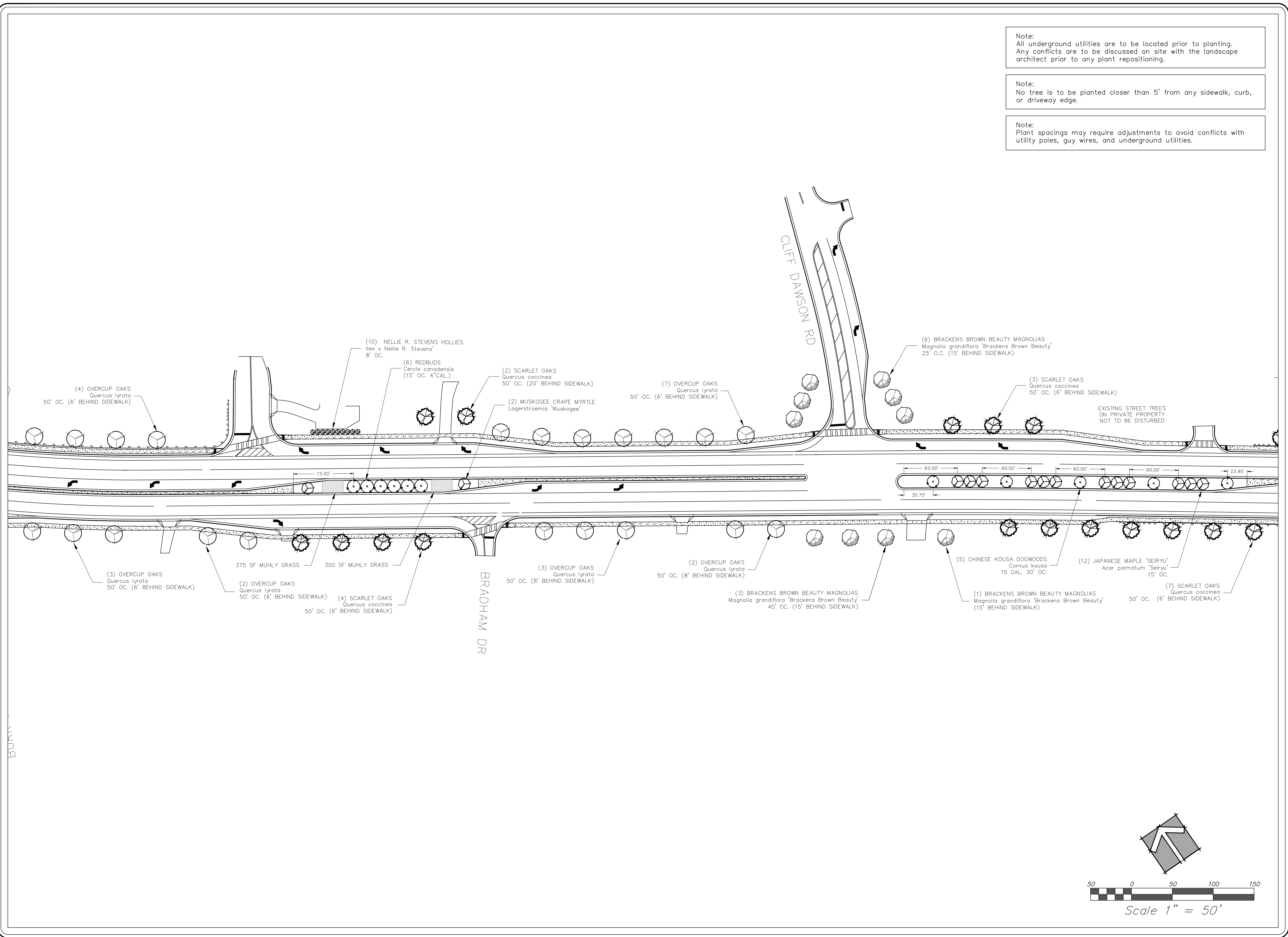
SHEET

9

DATE: 10/20/2018  
Job # 18-009  
NOT RELEASED FOR CONSTRUCTION

NOTICE: THESE DRAWINGS ARE INSTRUMENTS OF PROFESSIONAL SERVICE AND ARE PROTECTED BY COMMON LAW, STATUTORY, AND OTHER RESERVED RIGHTS INCLUDING COPYRIGHT. THESE DRAWINGS MAY NOT BE REPRODUCED OR USED FOR ANY PURPOSE WITHOUT THE WRITTEN CONSENT OF BEALL AND COMPANY AND ASSOCIATED PROJECT CONSULTANTS.





Note:  
All underground utilities are to be located prior to planting.  
Any conflicts are to be discussed on site with the landscape architect prior to any plant repositioning.

Note:  
No tree is to be planted closer than 5' from any sidewalk, curb, or driveway edge.

Note:  
Plant spacings may require adjustments to avoid conflicts with utility poles, guy wires, and underground utilities.




BEALL  
& COMPANY

LAND PLANNING  
LANDSCAPE ARCHITECTURE  
SITE ENGINEERING

3651 MARS HILL ROAD  
SUITE 1400  
WATKINSVILLE, GA 30677  
(706) 543-0907  
www.beallandcompany.com

LANDSCAPE DEVELOPMENT PLANS FOR:  
**MARS HILL PARKWAY**  
PHASE I  
±3.50 MILES FROM UNIVERSITY PARKWAY TO HOG MOUNTAIN ROAD  
OCONEE COUNTY, GEORGIA

OWNER(S)/PERMITTEE  
OCONEE COUNTY  
BOARD OF COMMISSIONERS  
&  
OCONEE INDUSTRIAL  
DEVELOPMENT AUTHORITY



GSWCC LEVEL II  
CERTIFICATION #025972

REVISION	DATE
No.	
1	10/20/18
2	
3	
4	
5	
6	
7	
8	
9	
10	
11	
12	
13	
14	
15	
16	
17	
18	
19	
20	
21	
22	
23	
24	
25	
26	
27	
28	
29	
30	
31	
32	
33	
34	
35	
36	
37	
38	
39	
40	
41	
42	
43	
44	
45	
46	
47	
48	
49	
50	
51	
52	
53	
54	
55	
56	
57	
58	
59	
60	
61	
62	
63	
64	
65	
66	
67	
68	
69	
70	
71	
72	
73	
74	
75	
76	
77	
78	
79	
80	
81	
82	
83	
84	
85	
86	
87	
88	
89	
90	
91	
92	
93	
94	
95	
96	
97	
98	
99	
100	

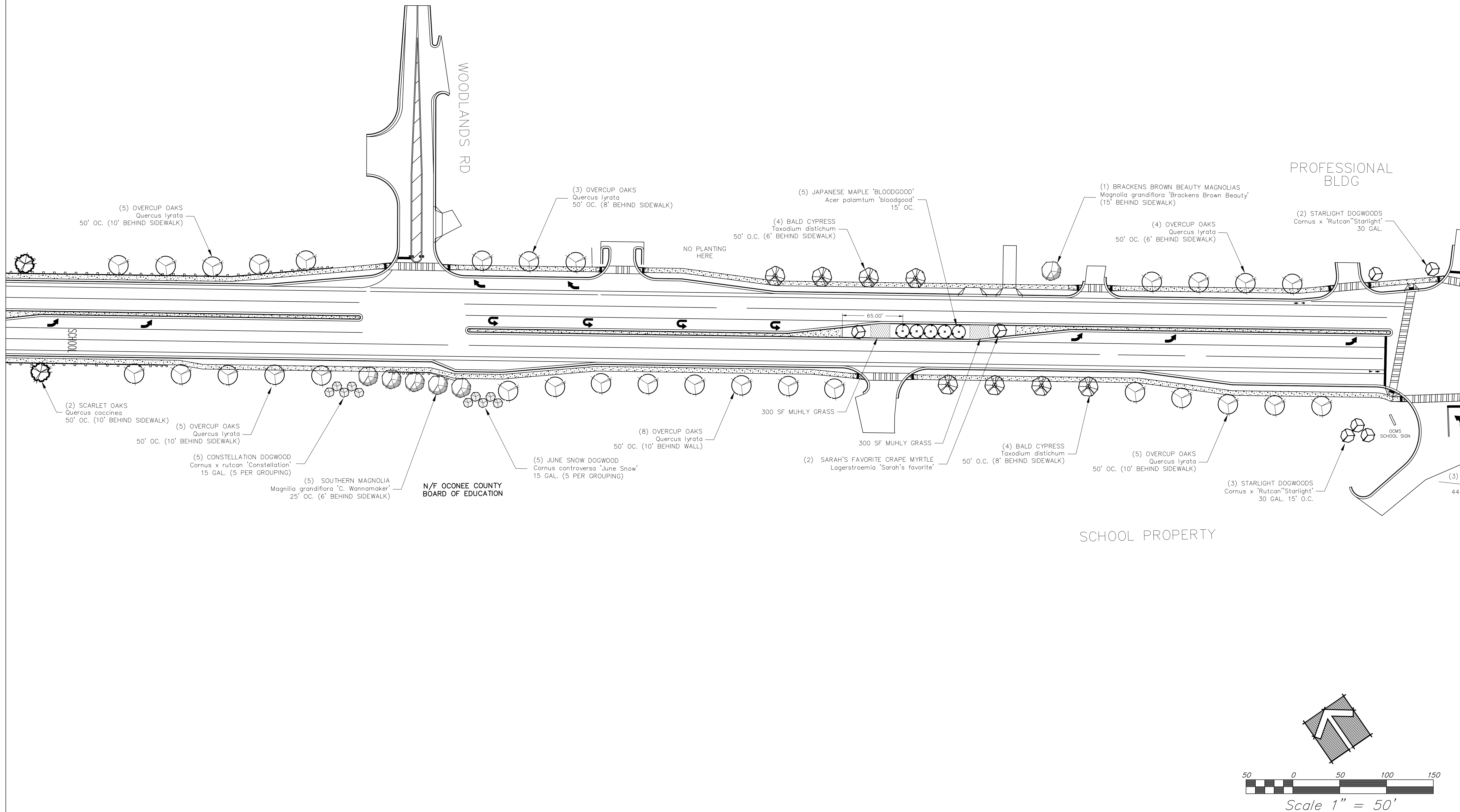
PLANTING PLAN

SHEET

10

DATE: 10/20/2018  
Job # 18-009  
NOT RELEASED FOR CONSTRUCTION





Note:  
All underground utilities are to be located prior to planting.  
Any conflicts are to be discussed on site with the landscape architect prior to any plant repositioning.

Note:  
No tree is to be planted closer than 5' from any sidewalk, curb, or driveway edge.

Note:  
Plant spacings may require adjustments to avoid conflicts with utility poles, guy wires, and underground utilities.



**BEALL  
& COMPANY**

LAND PLANNING  
LANDSCAPE ARCHITECTURE  
SITE ENGINEERING

3651 MARS HILL ROAD  
SUITE 1400  
WATKINSVILLE, GA 30677  
(706) 543-0907  
www.beallandcompany.com

LANDSCAPE DEVELOPMENT PLANS FOR:  
**MARS HILL PARKWAY  
PHASE I**  
±3.50 MILES FROM UNIVERSITY PARKWAY TO HOG MOUNTAIN ROAD  
OCONEE COUNTY, GEORGIA

OWNER(S)/PERMITTEE  
OCONEE COUNTY  
BOARD OF COMMISSIONERS  
&  
OCONEE INDUSTRIAL  
DEVELOPMENT AUTHORITY



GSWCC LEVEL II  
CERTIFICATION #025972

REVISION	DATE	DESCRIPTION
No.	1	Revised Total 10-20-18
DRAWN BY:	WJB/KGB	
DESIGNED BY:	WJB/KGB	
CHECKED BY:	KAB	
PLANTING PLAN		
SHEET		
11		
DATE: 10/20/2018		
Job # 18-009		
NOT RELEASED FOR CONSTRUCTION		

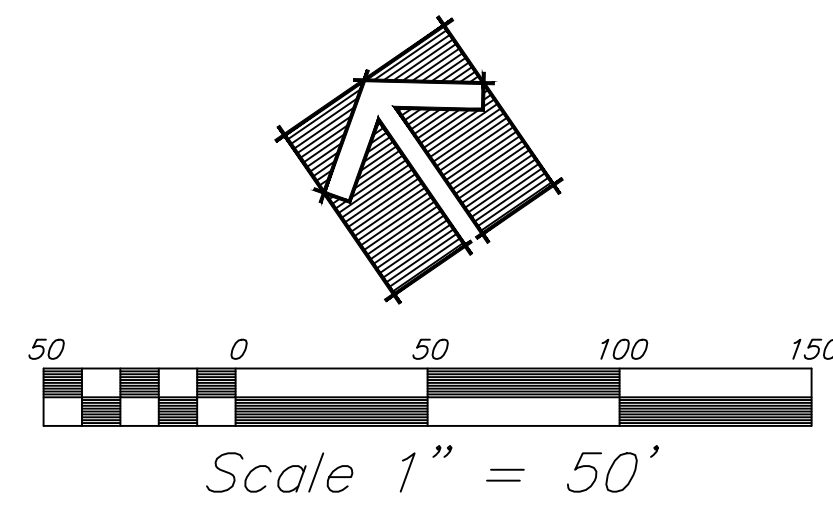
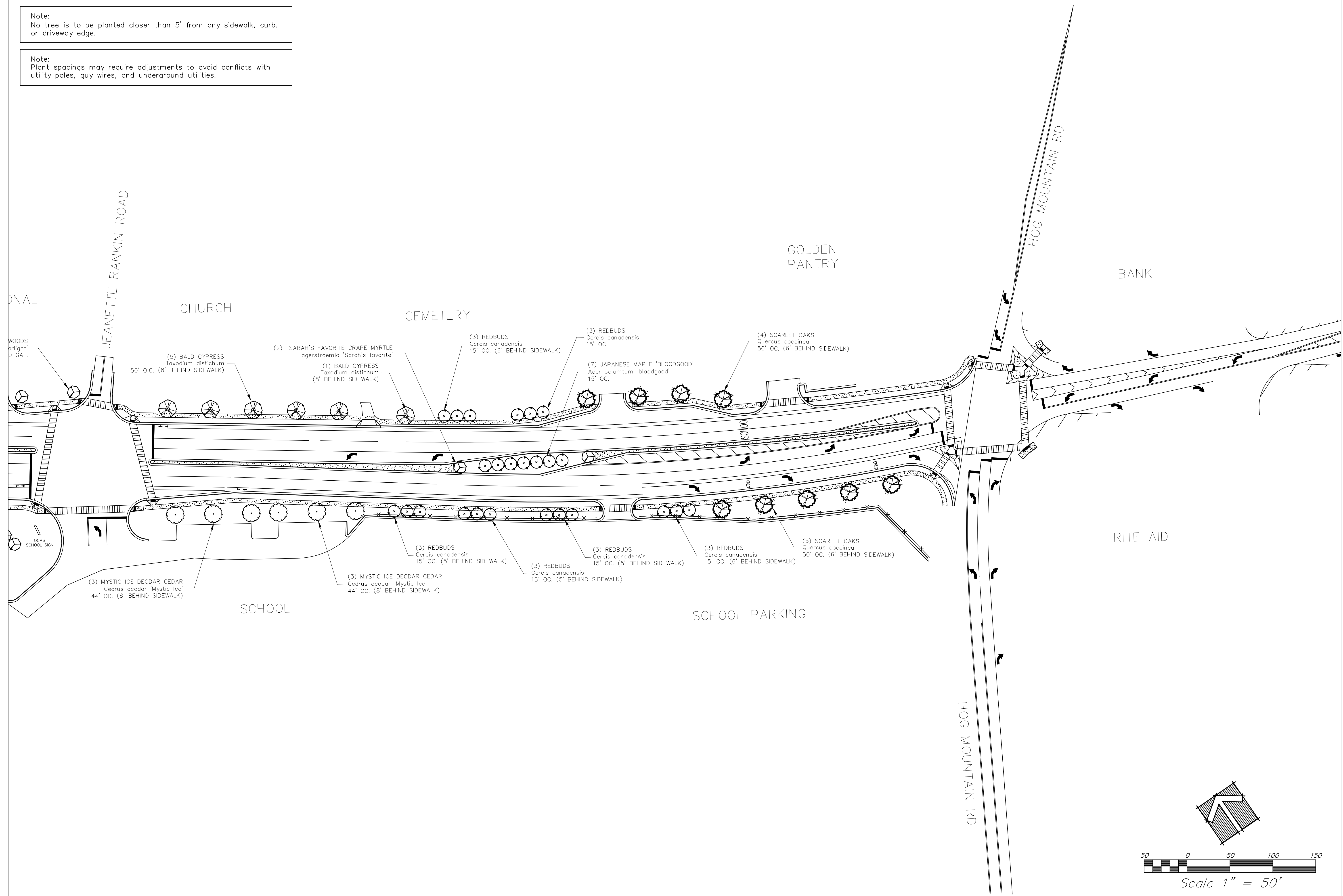
NOTICE: THESE DRAWINGS ARE INSTRUMENTS OF PROFESSIONAL SERVICE AND ARE PROTECTED BY COMMON LAW, STATUTORY, AND OTHER RESERVED RIGHTS INCLUDING COPYRIGHT. THESE DRAWINGS MAY NOT BE REPRODUCED OR USED FOR ANY PURPOSE WITHOUT THE WRITTEN CONSENT OF BEALL AND COMPANY AND ASSOCIATED PROJECT CONSULTANTS.




Note:  
All underground utilities are to be located prior to planting.  
Any conflicts are to be discussed on site with the landscape architect prior to any plant repositioning.

Note:  
No tree is to be planted closer than 5' from any sidewalk, curb, or driveway edge.

Note:  
Plant spacings may require adjustments to avoid conflicts with utility poles, guy wires, and underground utilities.





**BEALL  
& COMPANY**

LAND PLANNING  
LANDSCAPE ARCHITECTURE  
SITE ENGINEERING

3651 MARS HILL ROAD  
SUITE 1400  
WATKINSVILLE, GA 30677  
(706) 543-0907  
www.beallandcompany.com


LANDSCAPE DEVELOPMENT PLANS FOR:

**MARS HILL PARKWAY  
PHASE I**

±3.50 MILES FROM UNIVERSITY PARKWAY TO HOG MOUNTAIN ROAD  
OCONEE COUNTY, GEORGIA

OWNER(S)/PERMITTEE

OCONEE COUNTY  
BOARD OF COMMISSIONERS  
&  
OCONEE INDUSTRIAL  
DEVELOPMENT AUTHORITY



GSWCC LEVEL II  
CERTIFICATION #025972

NO.	REVISION	DATE
1	Revised	10-20-18

DRAWN BY: WJB/KGB

DESIGNED BY: WJB/KGB

CHECKED BY: KAB

PLANTING PLAN

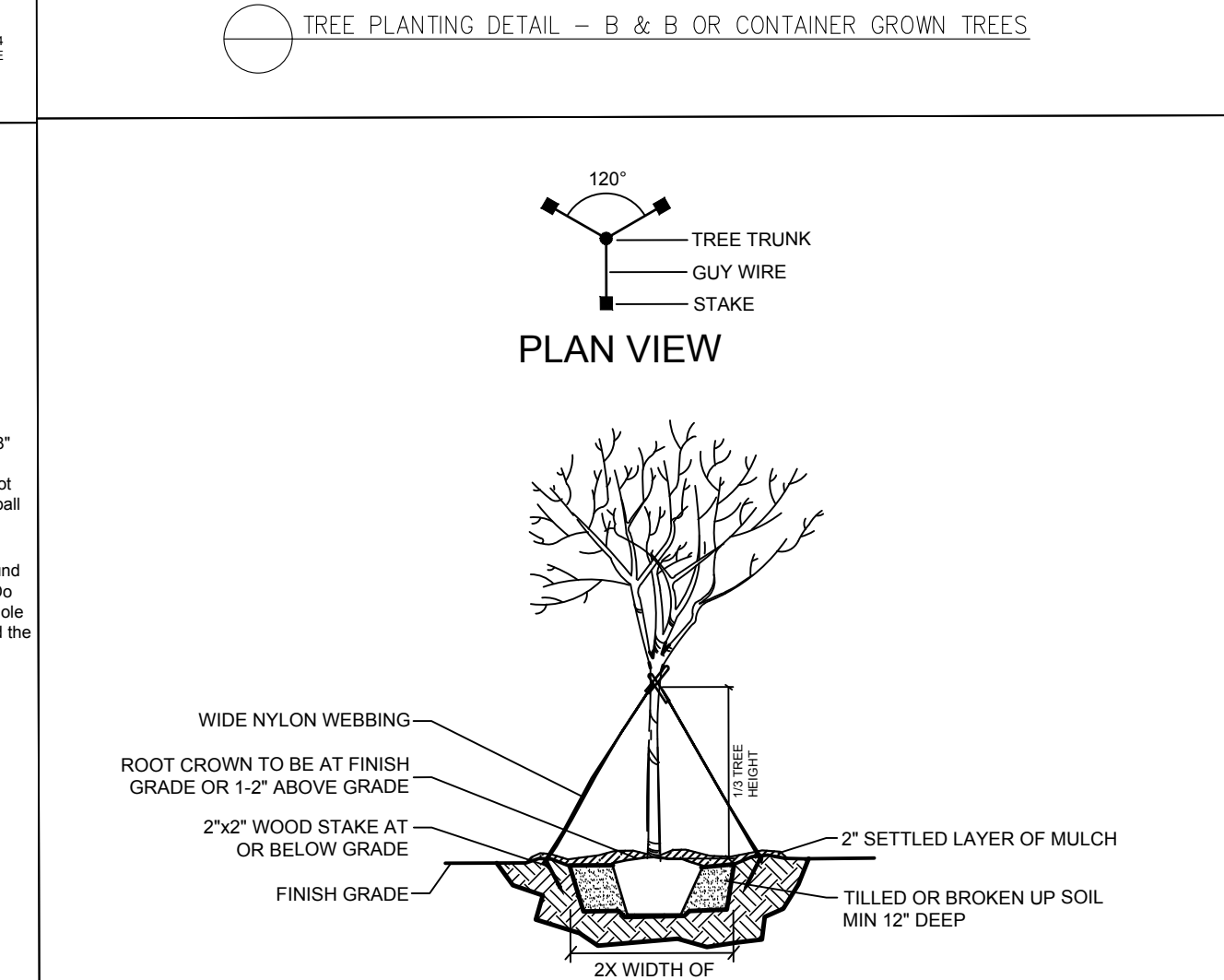
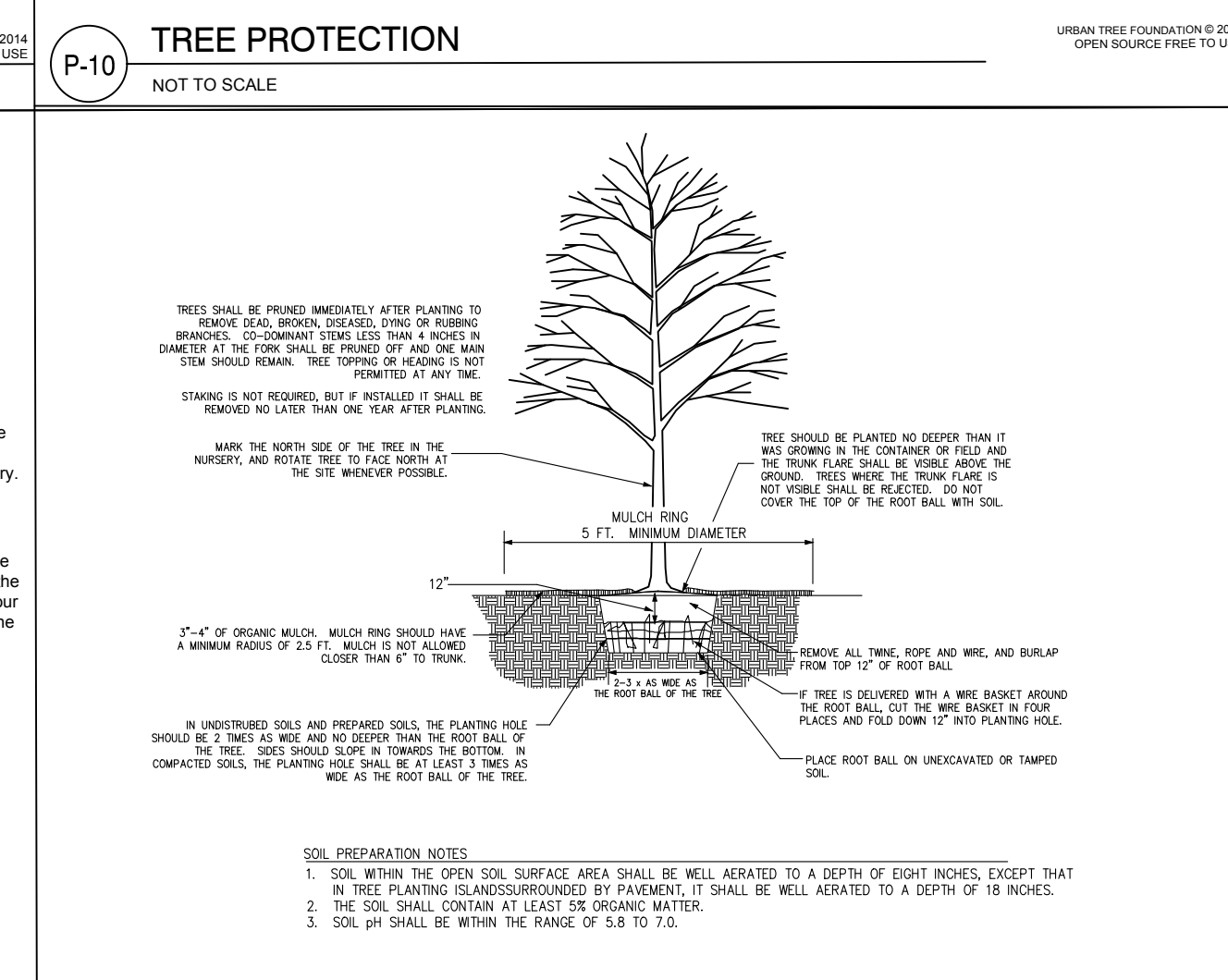
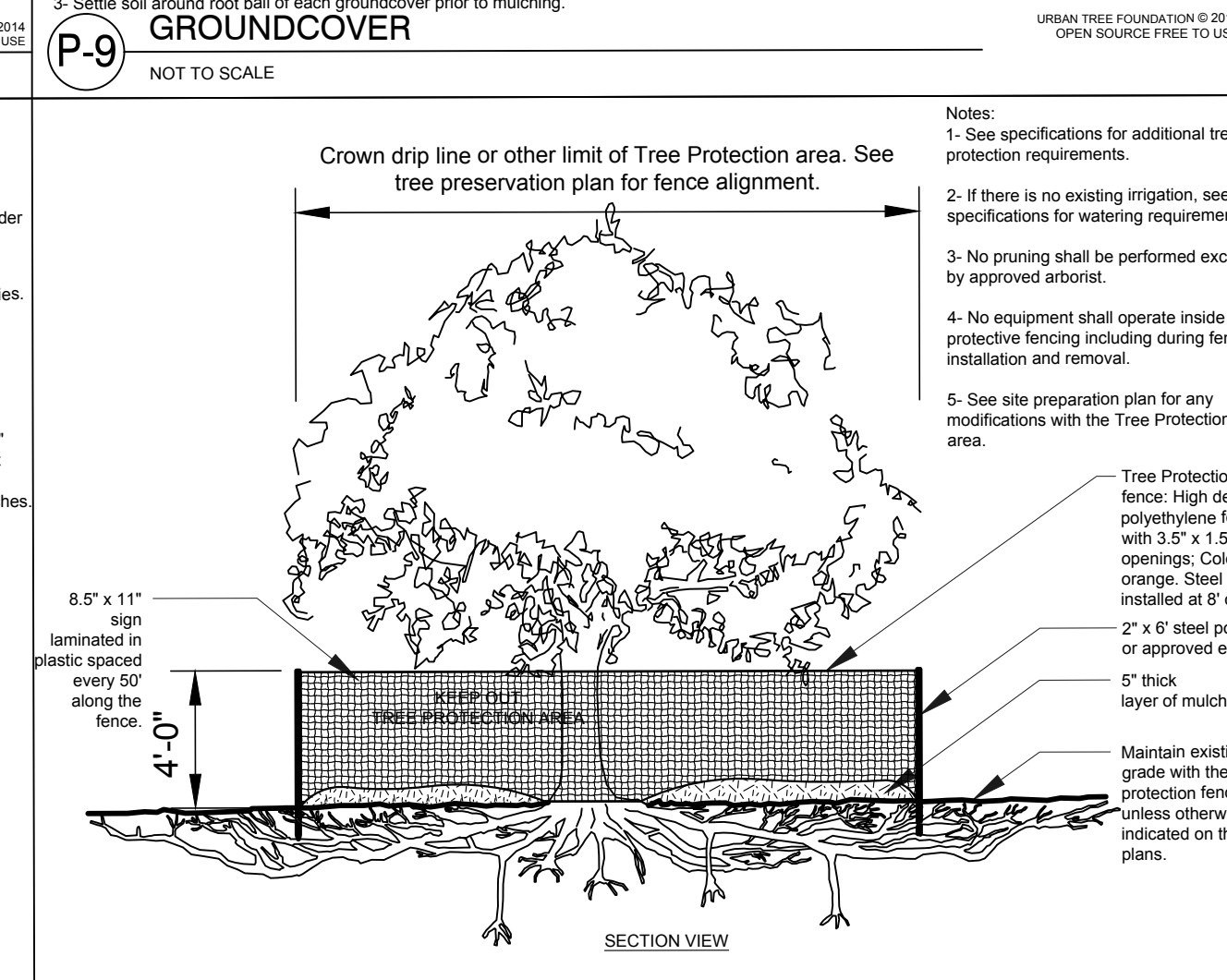
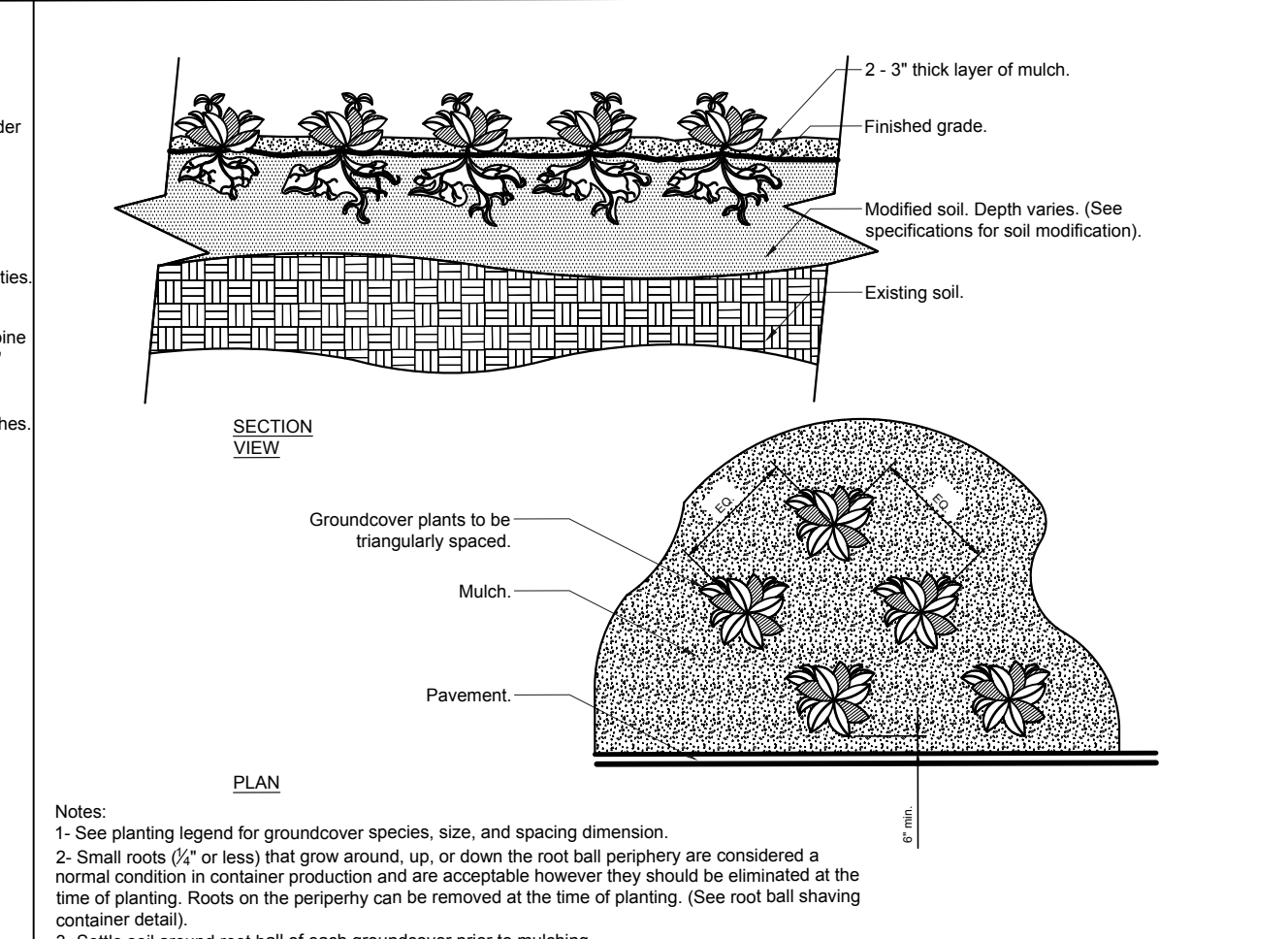
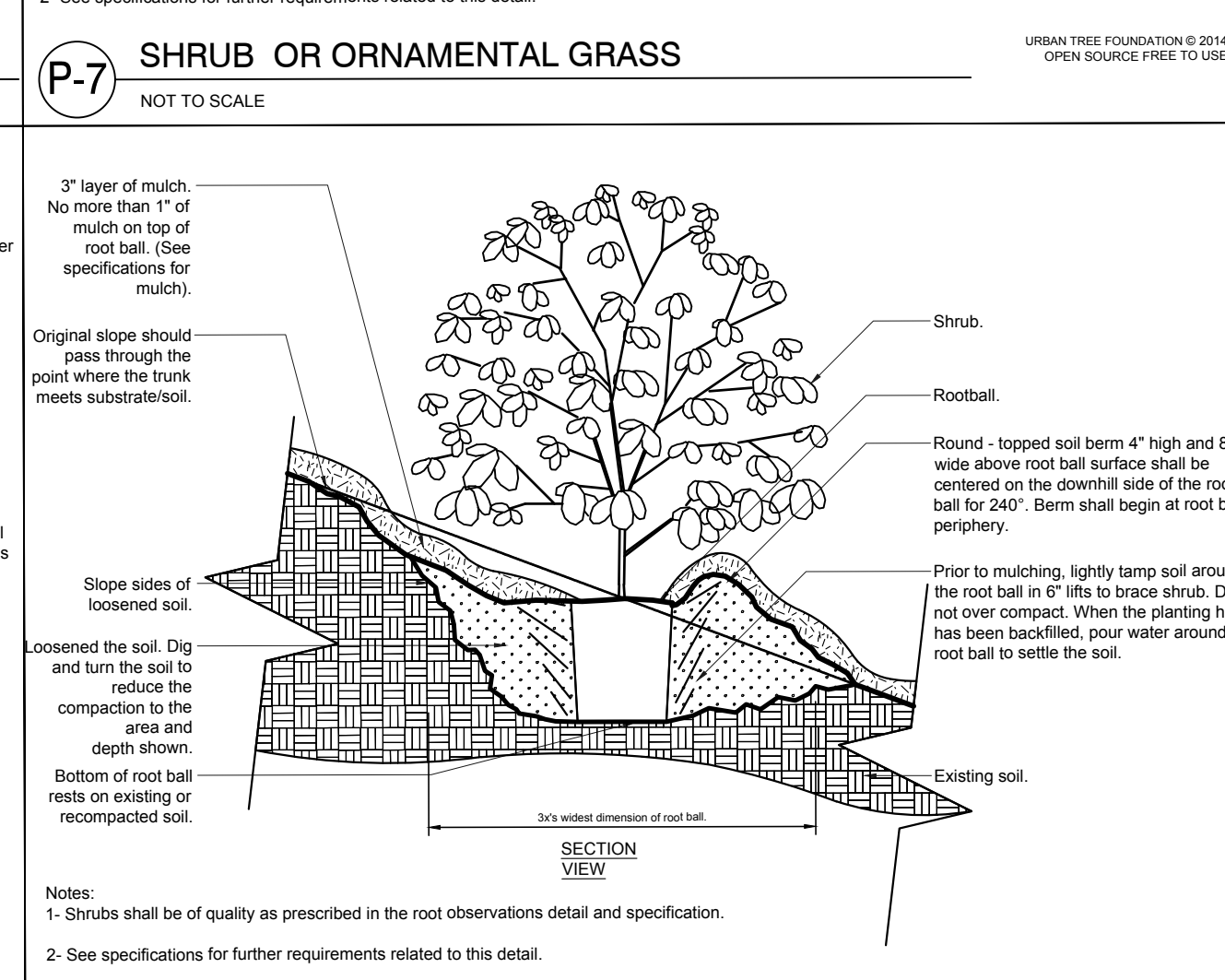
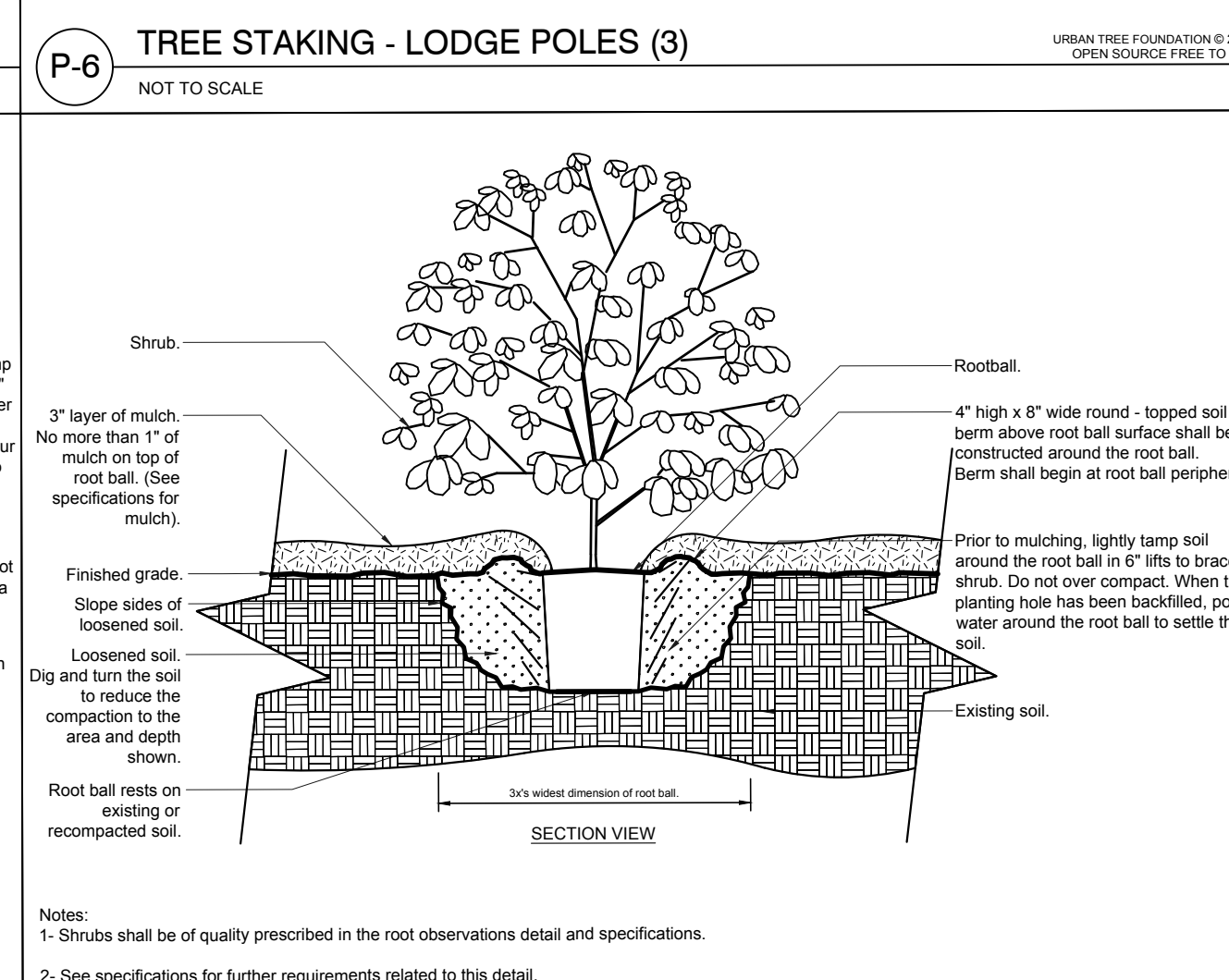
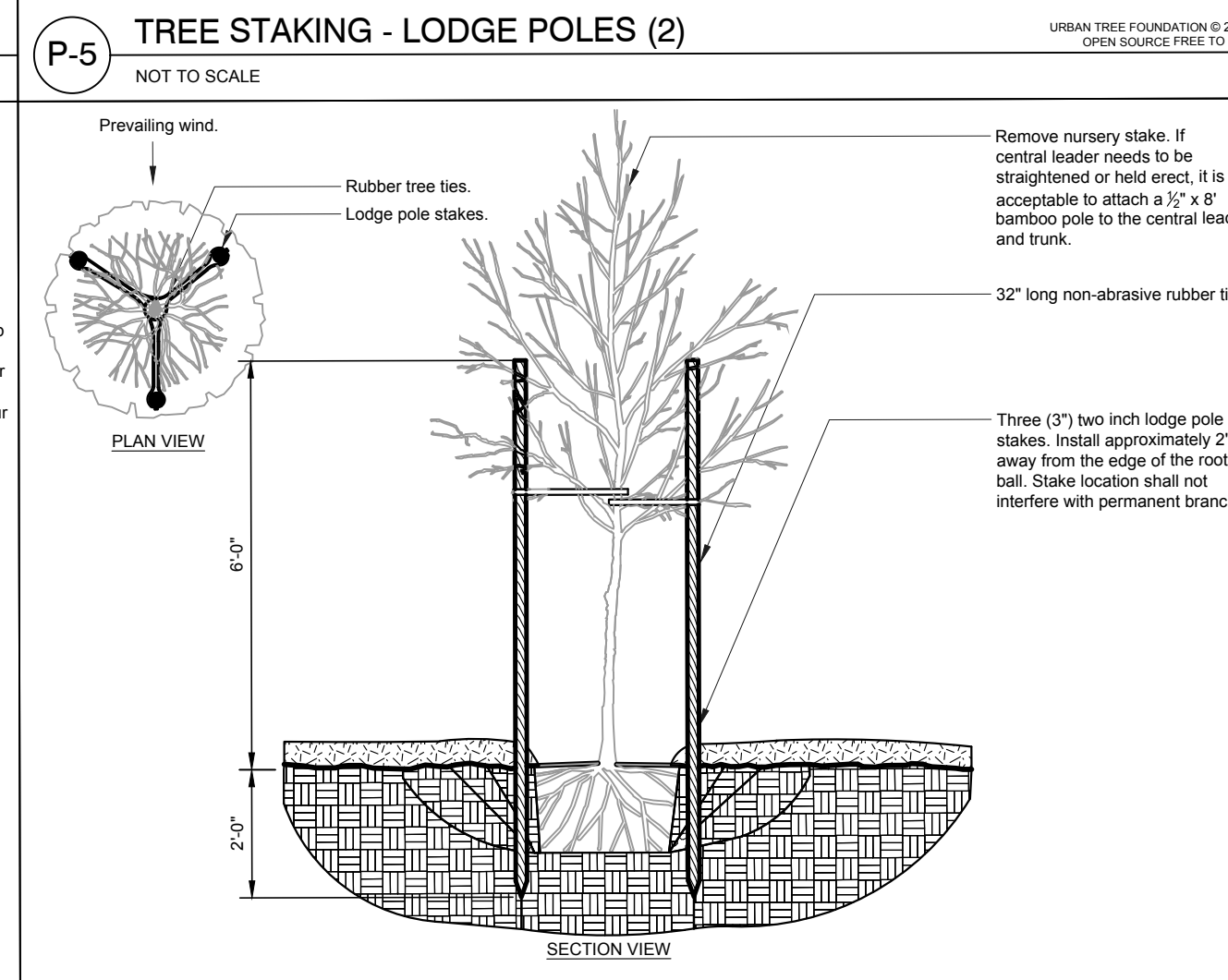
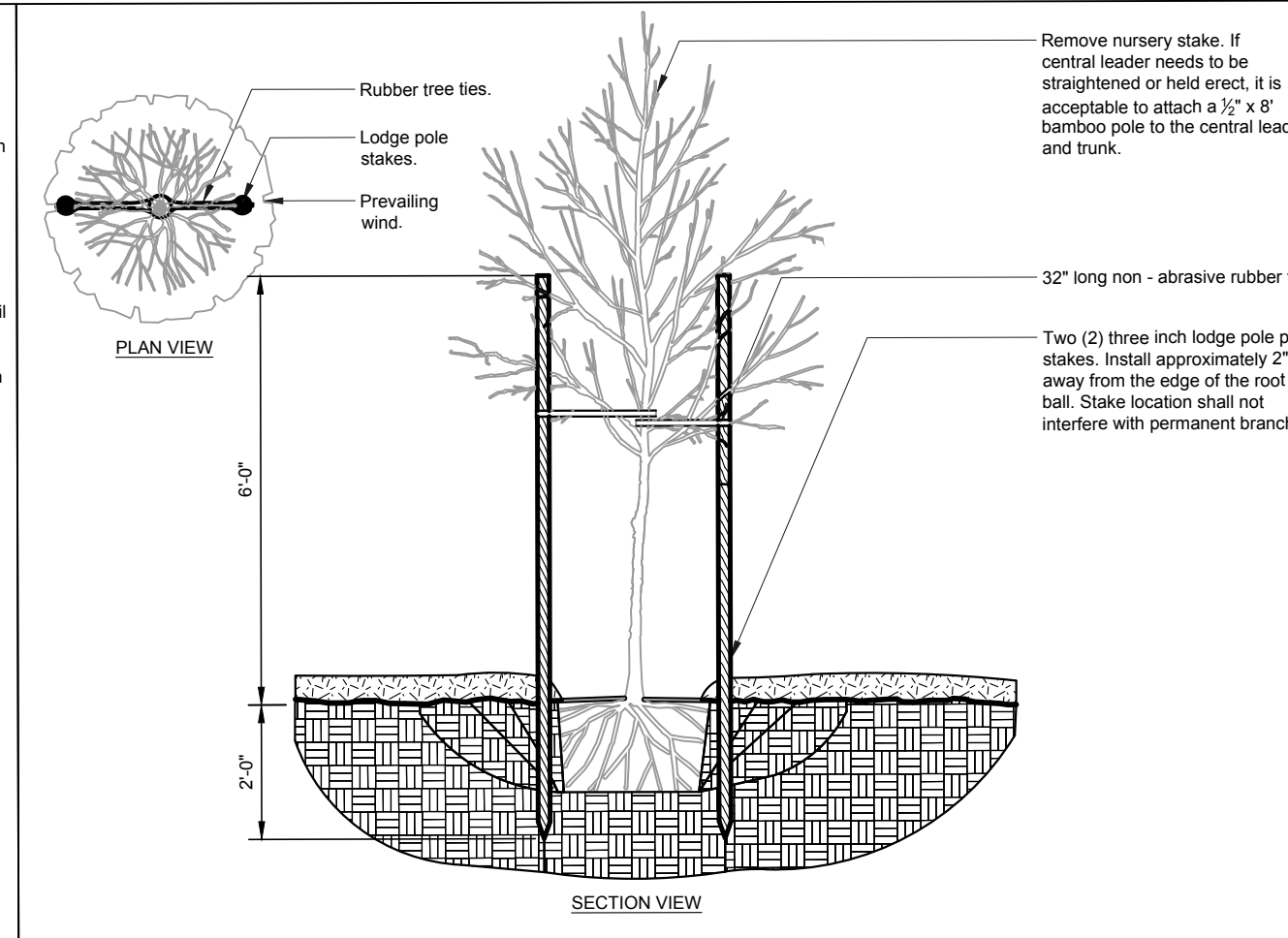
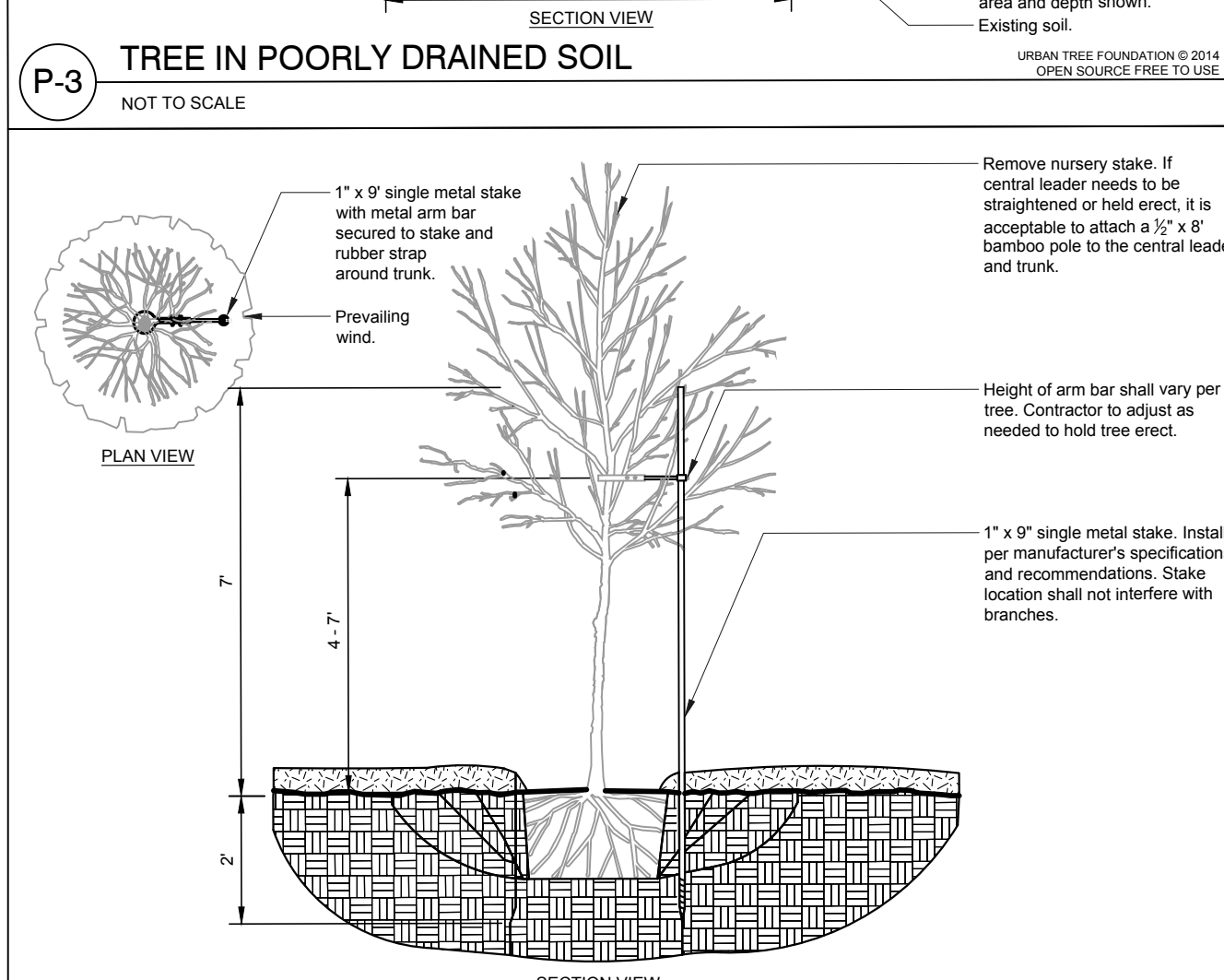
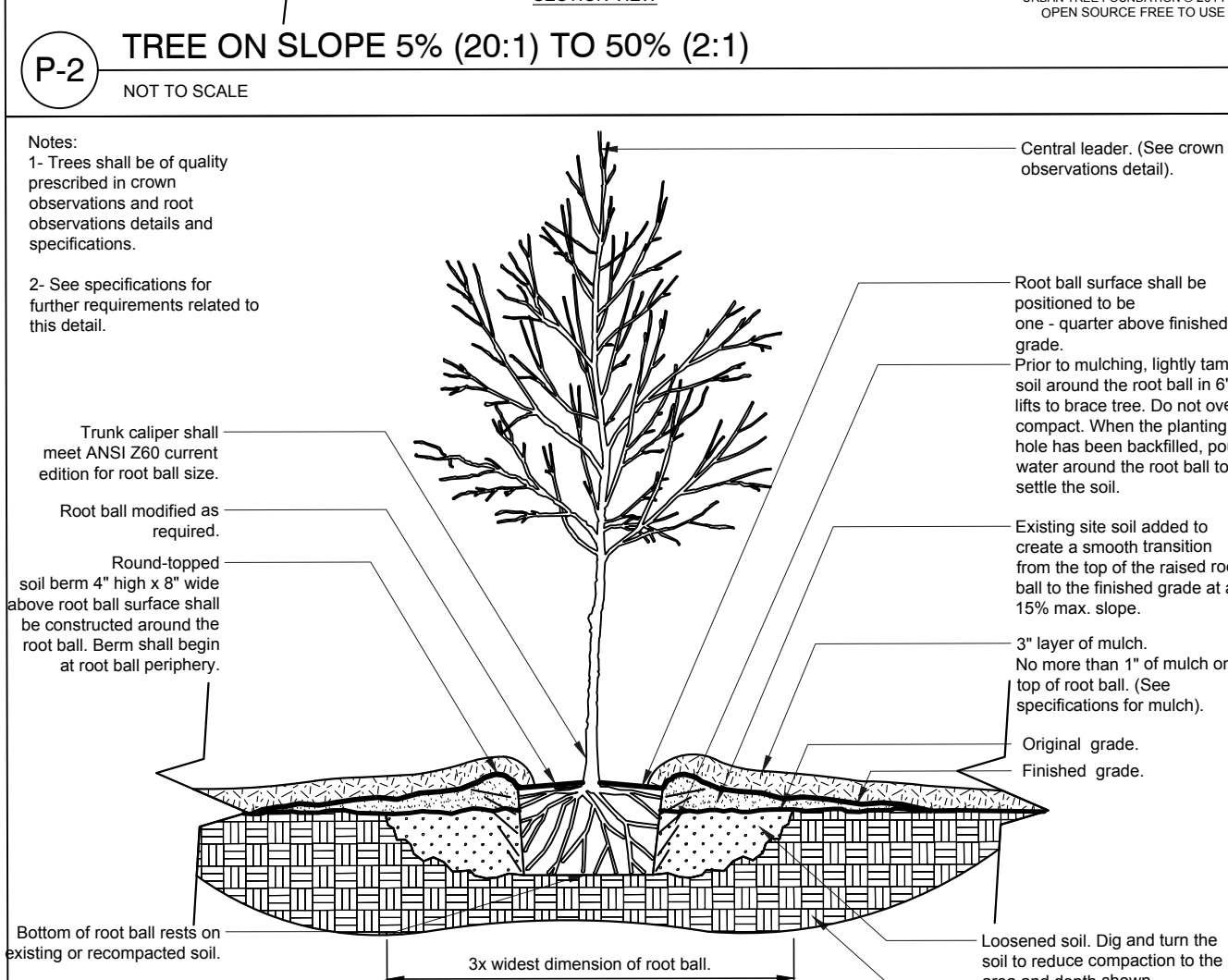
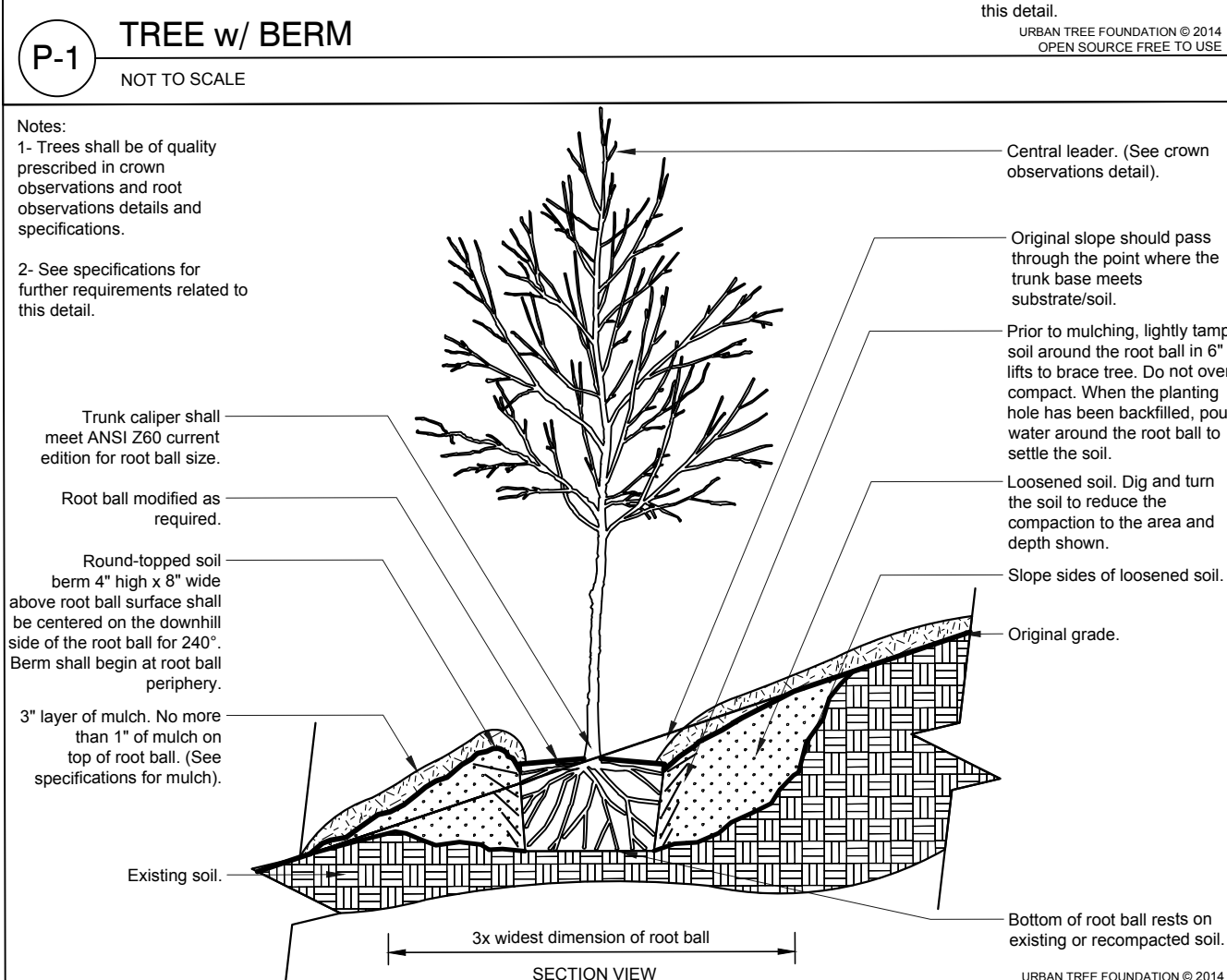
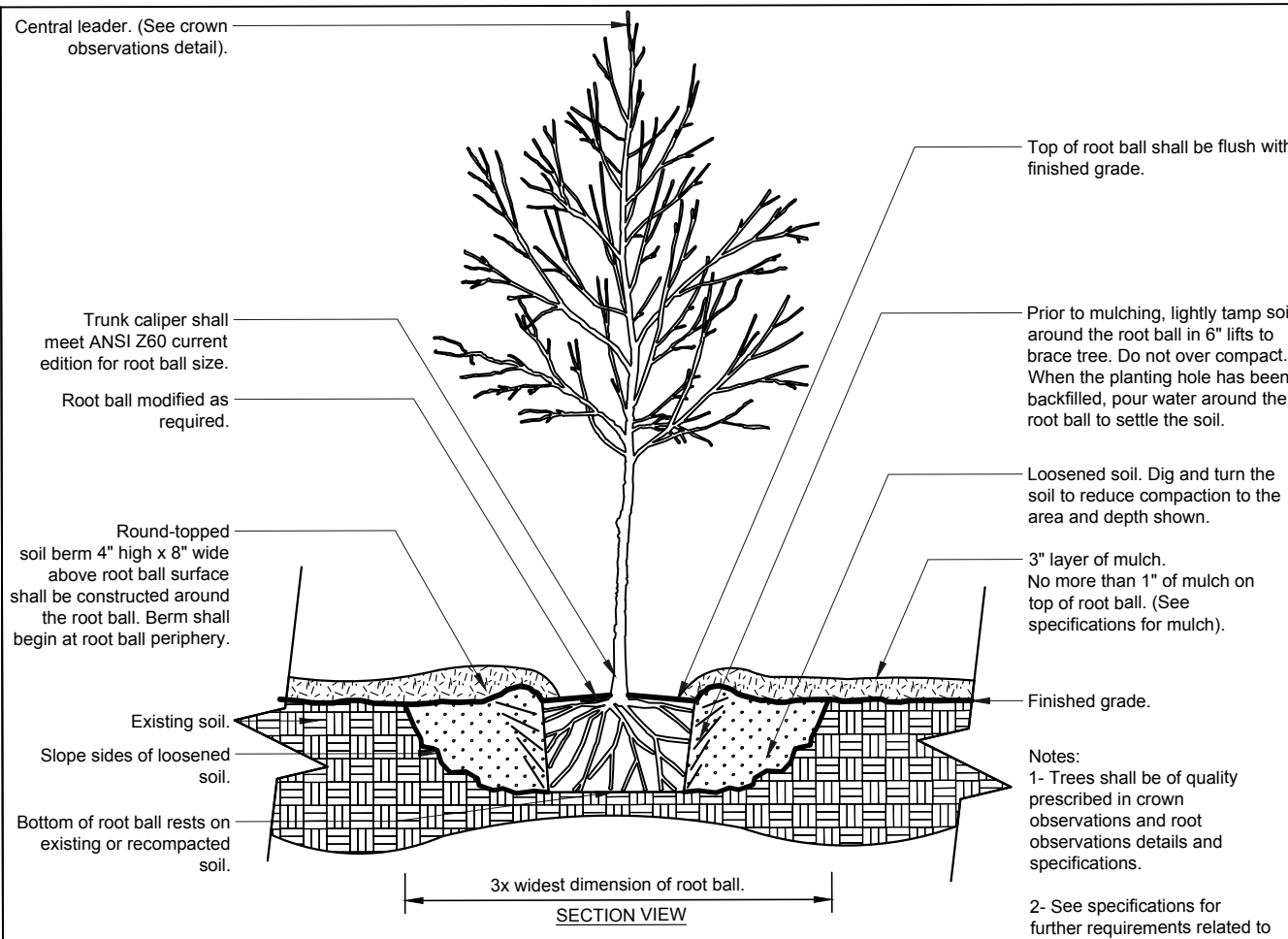
SHEET

**12**

DATE: 10/20/2018  
Job # 18-009  
NOT RELEASED FOR CONSTRUCTION

NOTICE: THESE DRAWINGS ARE INSTRUMENTS OF PROFESSIONAL SERVICE AND ARE PROTECTED BY COMMON LAW, STATUTORY, AND OTHER RESERVED RIGHTS INCLUDING COPYRIGHT. THESE DRAWINGS MAY NOT BE REPRODUCED OR USED FOR ANY PURPOSE WITHOUT THE WRITTEN CONSENT OF BEALL AND COMPANY AND ASSOCIATED PROJECT CONSULTANTS.





**Planting Notes**  
General:  
Contractor is responsible for the site inspection before landscape construction and installation in order to become familiar with the existing conditions. Contractor is responsible for locating all existing underground utilities before beginning construction, prior to submitting a bid, verify any discrepancies between the notes, specifications, drawings or site conditions with the landscape architect.

Contractor shall complete soil test in all planting areas to determine soil amendment requirements. Contractor shall adjust pH and fertility based upon the soil test results. No addition to or placement of soil is to be done prior to the completion of a soil test. Testing shall be performed by a suitable laboratory. No planting shall begin until and proper adjustment have been made.

Some trees and specimen plant material may be supplied by owner. Verify with owner.

Contractor shall layout proposed trees and bed lines for planting for review by landscape architect prior to planting. A minimum of 24 hours notice should be given and anticipated by the contractor for this review.

Due to varying site conditions, the contractor should anticipate field adjustments by the landscape architect.

Plant materials are to be guaranteed for a period of 12 months. Plant material which remain unhealthy will be replaced by the landscape contractor before the expiration of the guarantee period or immediately if so directed by the landscape architect.

The property is to be maintained by a landscape maintenance contractor licensed to apply fertilizer, herbicides and pesticides by the State of Georgia.

The maintenance contract will be reviewed and reassessed on an annual basis.

**Materials:**  
Landscape material shall comply with Oconee Co standards.

Landscape material shall be well formed, vigorous, growing specimens with growth typical or varieties specified and shall be free from, damage, insects and diseases. Material shall equal or surpass #1 quality as defined in the current issue of "American Standards for Nursery Stock" as published by the American Nurserymen, Inc.

All plant materials are subject to approval or refusal by the landscape architect at the job site. All material rejected shall be removed from the job site at no additional cost to the owner.

All plant material is to be carefully handled by the root ball, not the trunk, branches, and/or foliage of the plant. Mishandled plant material may be rejected by the landscape architect.

All plant material is to be well rooted, not root bound, such that the root ball remains intact throughout the planting process. Reject all cracked root balls.

Execution:  
All trees greater than 2" caliper shall be staked and guyed on three sides. See details.

All shrub and tree pits shall be amended with a soil mixture consisting of GR0-TONE Bed Mix (1/4 lb. per gallon of plant size), 1/2 Black Kow Composted Cow Manure (1 lb. per gallon of plant size).

All groundcover and seasonal color beds shall have the above mixture tilled into bed area to a depth of 4".

All planting beds and tree pits shall be mulched with mulch approved by the landscape architect as noted in the landscape specifications.

Excavate edges of all planting beds to 2" depth to form a neat and crisp definition.

Contractor shall remove debris and fine grade all areas for approval by landscape architect.

Remove guy wires and stakes at end of guarantee period.

**BEALL & COMPANY**

LAND PLANNING  
LANDSCAPE ARCHITECTURE  
SITE ENGINEERING

3651 MARS HILL ROAD  
SUITE 1400  
WATKINSVILLE, GA 30677  
(706) 543-0907  
www.beallandcompany.com

LANDSCAPE DEVELOPMENT PLANS FOR:

**MARS HILL PARKWAY**

PHASE I

±350 MILES FROM UNIVERSITY PARKWAY TO HOG MOUNTAIN ROAD  
OCONEE COUNTY, GEORGIA

OWNER(S)/PERMITTEE

OCONEE COUNTY  
BOARD OF COMMISSIONERS  
&  
OCONEE INDUSTRIAL  
DEVELOPMENT AUTHORITY

GEORGIA  
REGISTERED  
LANDSCAPE ARCHITECT  
KENNETH A. BEALL

GSWCC LEVEL II  
CERTIFICATION #025972

No.	REVISION	DATE
1	Revised Title 10-20-18	10/20/18

DRAWN BY: WJB/KCB

DESIGNED BY: WJB/KCB

CHECKED BY: KAB

PLANTING DETAILS

SHEET

**13**

DATE: 10/20/2018  
Job # 18-009  
NOT RELEASED FOR CONSTRUCTION

NOTICE: THESE DRAWINGS ARE INSTRUMENTS OF PROFESSIONAL SERVICE AND ARE PROTECTED BY COMMON LAW, STATUTORY, AND OTHER RESERVED RIGHTS INCLUDING COPYRIGHT. THESE DRAWINGS MAY NOT BE REPRODUCED OR USED FOR ANY PURPOSE WITHOUT THE WRITTEN CONSENT OF BEALL & COMPANY AND ASSOCIATED PROJECT CONSULTANTS.





3651 MARS HILL ROAD  
SUITE 1400  
WATKINSVILLE, GA 30677  
(706) 543-0907  
[www.beallandcompany.com](http://www.beallandcompany.com)

±3.50 MILES FROM UNIVERSITY PARKWAY TO HOG MOUNTAIN ROAD  
OCONEE COUNTY, GEORGIA

OWNER(S)/PERMITTEE  
OCONEE COUNTY  
BOARD OF COMMISSIONERS  
&  
OCONEE INDUSTRIAL  
DEVELOPMENT AUTHORITY



GSWCC LEVEL II  
CERTIFICATION #025972

No.	REVISION	DATE:
1	Revised Thru 10-20-18	10/20/18

DRAWN BY:	WJB/KGB
DESIGNED BY:	WJB/KGB
CHECKED BY:	KAB

## FINAL PLANT SCHEDULE BID FORM

SHEET

14

DATE: 10/20/2018

Job # 18-008

NOT RELEASED FOR CONSTRUCTION

FINAL PLANT SCHEDULE / BID FORM		Revised 10/20/2018		Bid Submitted By:						
Project:	Mars Hill Parkway Landscape/Planting Enhancement: PHASE ONE (from University Parkway / GA HWY 316 to Hog Mountain Road / GA HWY 53) Oconee County Georgia									
Item #	Trees Common Name	Botanical Name	Item Count	Unit	Cond.	Minimun Install Size	Instructions/Notes	*Installed Unit Price ea. \$	Extended Line-Item \$	
1	Trident Maple 'Aeryn'	Acer buergerianum 'Aeryn'	32	ea.	B&B	2.5' cal	Flagged at Moon's Tree Farm, Washington GA			
2	Japanese Maple 'Bloodgood'	Acer palmatum 'Bloodgood'	25	ea.	B&B	10' hgt.	Flagged at Southeastern Growers, Watkinsville GA			
3	Japanese Maple 'Seiryu'	Acer palmatum 'Seiryu'	12	ea.	B&B	8' hgt.	Flagged at Southeastern Growers, Watkinsville GA			
4	Native Chalk Bark Maple	Acer saccharum sub.sp. leucoderme	28	ea.	B&B	2.5' cal	Flagged at Moons Tree Farm, Washington GA			
5	Deodar Cedar 'Mystic Ice'	Cedrus deodara 'Mystic Ice'	11	ea.	B&B	2.5' cal	Flagged at Moons Tree Farm, Washington GA			
6	Eastern Redbud	Cercis canadensis	12	ea.	B&B	4" cal.	Flagged at Southeastern Growers, Watkinsville GA			
7	Eastern Redbud	Cercis canadensis	32	ea.	Cont.	45 gal.	Flagged at Southeastern Growers, Watkinsville GA			
8	Redbud 'Forest Pansy'	Cercis canadensis 'Forest Pansy'	13	ea.	B&B	2" cal	Flagged at Southeastern Growers, Watkinsville GA			
9	Redbud 'Rising Sun'	Cercis canadensis 'Rising Sun'	40	ea.	B&B	2" cal	Flagged at Southeastern Growers, Watkinsville GA			
9.5	White Fringetree	Chionanthus virginicus	6	ea.	Cont.	30- gal	Selected at Hale & Hines Nursery, McMinnville, TN			
10	American Yellowwood	Cleadrastis kentukea 'Perkins Pink'	5	ea.	Cont.	30- gal	Selected at Hale & Hines Nursery, McMinnville, TN			
10.01	White Dogwood	Cornus florida	10	ea.	Cont.	15 gal	Selected at Hale & Hines Nursery, McMinnville, TN			
10.1	Stellar Pink Dogwood	Cornus florida 'Stellar Pink'	5	ea.	Cont.	15 gal	Selected at Hale & Hines Nursery, McMinnville, TN			
10.2	Celestial White Dogwood	Cornus 'Rutcan' 'Celestial White'	5	ea.	Cont.	15 gal	Selected at Hale & Hines Nursery, McMinnville, TN			
10.3	Cherokee Brave Dogwood	Cornus Florida 'Cherokee Brave'	10	ea.	Cont.	15 gal	Selected at Hale & Hines Nursery, McMinnville, TN			
10.4	Chinese kousa Dogwood	Cornus kousa	5	ea.	Cont.	15 gal	Selected at Hale & Hines Nursery, McMinnville, TN			
10.4.1	Scarlet Fire Dogwood	Cornus kousa 'Scarlet Fire'	5	ea.	Cont.	15 gal	Selected at Hale & Hines Nursery, McMinnville, TN			
10.5	Blue Shadow Chinese Dogwood	Cornus kousa 'Blue Shadow'	5	ea.	Cont.	15 gal	Selected at Hale & Hines Nursery, McMinnville, TN			
10.6	Appalachian Mist Dogwood	Cornus florida 'Appalachian Mst'	10	ea.	Cont.	15 gal	Selected at Hale & Hines Nursery, McMinnville, TN			
10.7	Aurora Dogwood	Cornus x 'Rutban'	5	ea.	Cont.	15 gal	Selected at Hale & Hines Nursery, McMinnville, TN			
10.8	Milky Way Dogwood	Cornus kousa chinensis var. 'Milky Way'	5	ea.	Cont.	15 gal	Selected at Hale & Hines Nursery, McMinnville, TN			
10.9	Japanese Kintoki Dogwood	Cornus officinalis 'Kintoki'	5	ea.	Cont.	15 gal	Selected at Hale & Hines Nursery, McMinnville, TN			
10.10	June Snow Dogwood	Cornus controversa 'June Snow'	5	ea.	Cont.	15 gal	Selected at Hale & Hines Nursery, McMinnville, TN			
10.11	Constellation Dogwood	Cornus x 'Rutcan' 'Constellation'	5	ea.	Cont.	15 gal	Selected at Hale & Hines Nursery, McMinnville, TN			
10.12	Starlight Dogwood	Cornus x 'Rutcan' 'Starlight'	5	ea.	Cont.	30 gal	Selected at Hale & Hines Nursery, McMinnville, TN			
11	Cryptomeria 'Radicans'	Cryptomeria japonica 'Radicans'	14	ea.	Cont.	45 gal	Flagged at Southeastern Growers, Watkinsville GA, Limb-up 1'			
12	Georgia Gem Green Ash	Fraxinus pennsylvanica 'Oconee'	3	ea.	B&B	2.5' cal	Flagged at Moons Tree Farm, Washington GA			
12.5	Golden Globe Ginkgo	Ginkgo biloba 'Golden Globe'	5	ea.	Cont.	30 gal	Selected at Hale & Hines Nursery, McMinnville, TN			
12.6	Presidential Gold Ginkgo	Ginkgo biloba 'Presidential Gold'	5	ea.	Cont.	30 gal	Selected at Hale & Hines Nursery, McMinnville, TN			
13	Nellie Stevens Holly	Ilex cornuta 'Nellie R. Stevens'	10	ea.	B&B	8' hgt.	Flagged at Southeastern Growers, Watkinsville GA			
14	Crape Myrtle 'Sarah's Favorite'	Lagarstroemia indica 'Sarah's Favorite'	11	ea.	Cont.	45 gal	Flagged at Southeast Growers, Watkinsville GA			
15	Crape Myrtle 'Moonlight Magic'	Lagarstroemia indica 'Moonlight Magic'	6	ea.	B&B	8'-10' hgt.	Multi-Stem Standard; matched groupings			
16	Crape Myrtle 'Muskogee'	Lagarstroemia indica 'Muskogee'	8	ea.	B&B	8'-10' hgt.	Flagged at Southeastern Growers, Watkinsville GA			
17	Magnolia 'Brackens Brown Beauty'	Magnolia grandiflora 'B. Brown Beauty'	25	ea.	B&B	7' hgt.	Flagged at Southeastern Growers, Watkinsville GA			
18	Southern Magnolia	Magnolia grandiflora 'C. Wannemaker'	25	ea.	B&B	7' hgt.	Flagged at Southeastern Growers, Watkinsville GA			
19	Japanese Magnolia 'Black Tulip'	Magnolia x soulangeana 'Black Tulip'	9	ea.	B&B	2.5' cal.	Flagged at Moons Tree Farm, Washington GA			
FINAL PLANT SCHEDULE / BID FORM		Revised 10/20/2018		Bid Submitted By:						
Project:	Mars Hill Parkway Landscape/Planting Enhancement: PHASE ONE (from University Parkway / GA HWY 316 to Hog Mountain Road / GA HWY 53) Oconee County Georgia									
Item #	Trees Common Name	Botanical Name	Item Count	Unit	Cond.	Minimun Install Size	Instructions/Notes	*Installed Unit Price ea. \$	Extended Line-Item \$	
20	Merrill Magnolia	Magnolia x loebneri 'Merrill'	10	ea.	B&B	8'-10'	Flagged at Moons Tree Farm, Washington GA			
21	Blackgum / Black Tupelo	Nyssa sylvatica	18	ea.	B&B	4" cal.	Flagged at Southeastern Growers, Watkinsville GA			
22	Chinese Pistache	Pistacia chinensis	13	ea.	B&B	3" cal.	Flagged at Southeastern Growers, Watkinsville GA			
23	Swamp White Oak	Quercus bicolor	6	ea.	B&B	2.5' cal	Flagged at Moons Tree Farm, Washington GA			
24	Scarlet Oak	Quercus coccinea	67	ea.	Cont.	45 gal	Flagged at Southeastern Growers, Watkinsville GA			
25	Overcup Oak	Quercus lyrata	54	ea.	Cont.	45 gal	Flagged at Southeastern Growers, Watkinsville GA			
26	Nuttall Oak	Quercus nuttalli	51	ea.	B&B	2" cal	Flagged at Southeastern Growers, Watkinsville GA			
27	Shumard Oak	Quercus shumardii	48	ea.	Cont.	45 gal	Flagged at Southeastern Growers, Watkinsville GA			
	Reserve	Reserve								
28	Prystine Spire Snowbell	Styrax/japonicus 'Prystine Spire'	11	ea.	B&B	2" cal	Flagged at Moons Tree Farm, Washington GA			
29	Bald Cypress	Taxodium distichum 'Autumn Gold'	38	ea.	Cont.	45-gal	Flagged at Southeastern Growers, Watkinsville GA			
30	Princeton Elm	Ulmus americana 'Princeton'	23	ea.	B&B	2.5' cal.	Flagged at Moons Tree Farm, Washington GA			
Item # Vines & Ornamental Grasses										
31	Climbing Hydrangea	Hydrangea anomala subsp. petiolaris	38	ea.	Cont.	5 gal	Base of concrete wall plantings as noted on plans			
32	Cross Vine	Bignonia capreolata	32	ea.	Cont.	5 gal	Base of concrete wall plantings as noted on plans			
33	Pink Muhly Grass	Muehlenbergia capillaris	991	ea	Cont	1 gal	Install at 3 ft. on center spacing, massed in mulched beds Available at EVERGREEN NURSERY, Oconee County			
TOTALS PER PLANS			1822	TOTAL BID AMOUNT						\$
* "Installed Unit Price ea." equals the contractor installed price for each plant specified in accordance with the construction drawings, specifications, and general conditions of the contract, inclusive of all labor, materials, tools, equipment, facilities, transportation, and services necessary for and incidental to performing all operations in connection with furnishing, delivery, proper installation, watering, mulch, staking, warranty, maintenance before the warranty period, and maintenance of the plant during the maintenance warranty period (also known as "landscaping").										